

APP CRS
139°

Rwy Idg
TDZE
Apt Elev

3508
869
869

RNAV (GPS) RWY 14

CRYSTAL (MIC)

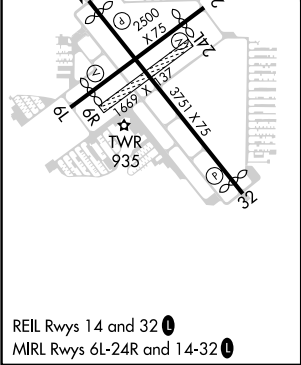
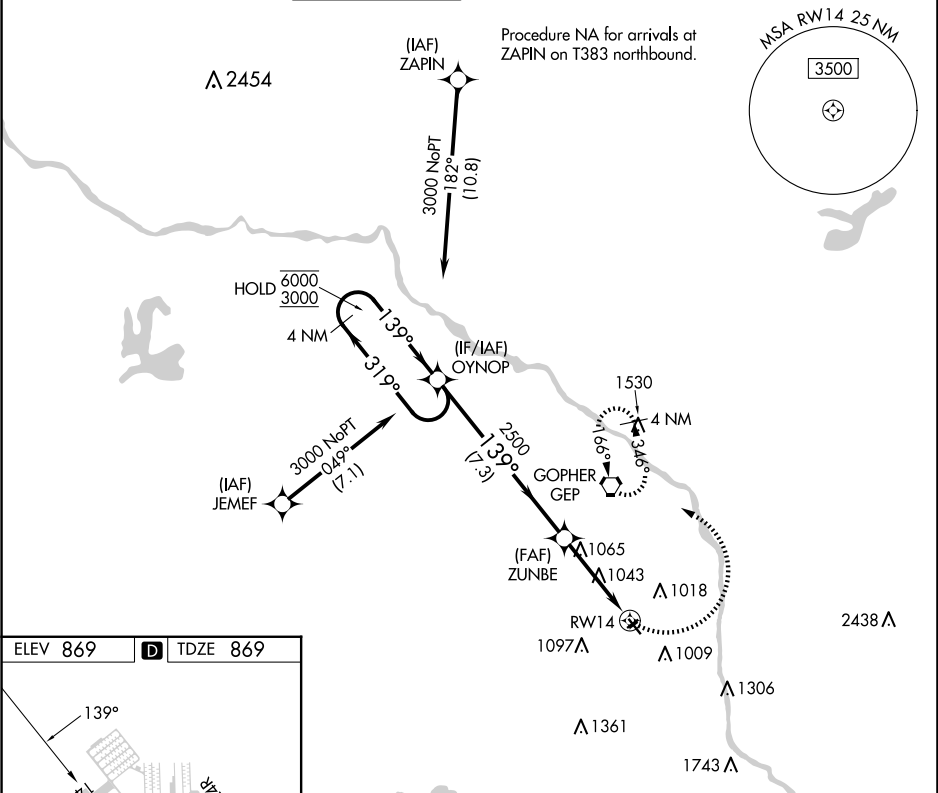
RNP APCH.

⚠

Circling NA to Rwy 6R and 24L.
Rwy 14 helicopter visibility reduction below ¾ SM NA.

MISSED APPROACH: Climbing left turn to 3100 direct
GEP VORTAC and hold, continue climb-in-hold to 3100.

ATIS 124.475	MINNEAPOLIS APP CON 126.5 335.65	CRYSTAL TOWER ★ 120.7 (CTAF) 0	GND CON 121.6	CLNC DEL 121.6	CLNC DEL 121.6 (When twr closed)	UNICOM 122.95
-----------------	-------------------------------------	-----------------------------------	------------------	-------------------	--	------------------



REIL Rwy 14 and 32
MIRL Rwy 6L-24R and 14-32

