

RNAV (GPS) RWY 31

APCH CRS	Rwy ldg	9999
315°	TDZE	10
	Arpt Elev	10

[USAF]

CAPE CANAVERAL SFS SKID STRIP (KXMR)

DME/DME RNP-0.3 NA.

- When ALS inop, increase CAT CDE vis to 1 3⁄8 miles.
- Circling not authorized NE of Rwy 13-31.

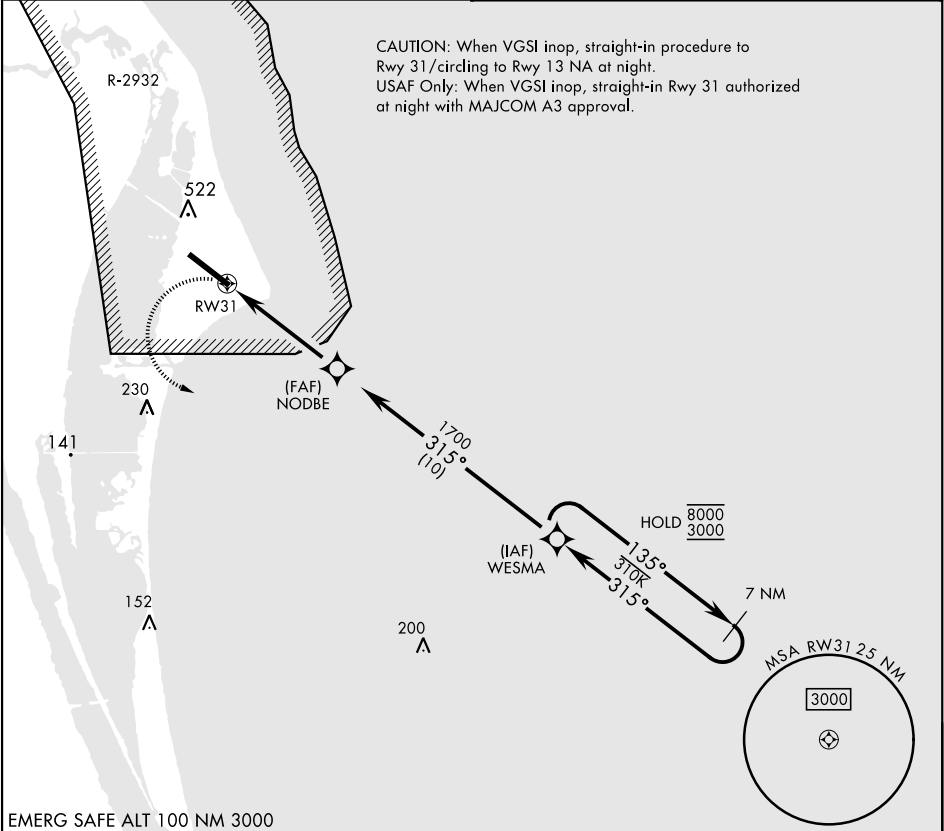
SALS

A2

MISSED APPROACH: Turn left, climb to 3000 direct WESMA and hold.

ORLANDO APP CON  
134.95 281.425

CAPE TOWER ★  
118.625 143.15 239.05



EMERG SAFE ALT 100 NM 3000

ELEV	10	TDZE	10		
WESMA	7 NM Holding Pattern				
	135° → 8000				
	← 315° 3000				
	315°				
	1700				
	3.04° TCH 79				
	5 NM				
CATEGORY	A	B	C	D	E
LNAV MDA *	500-1	491 (500-1)	500-1 1⁄8	491 (500-1 1⁄8)	
CIRCLING **	580-1	570 (600-1)	580-1 1⁄2	620-2	640-2 1⁄4
			570 (600-1 1⁄2)	610 (700-2)	630 (700-2 1⁄4)

RNAV (GPS) RWY 31

SE-3, 10 JUL 2025 to 07 AUG 2025

SE-3, 10 JUL 2025 to 07 AUG 2025