

VORTAC LVZ	APP CRS	Rwy Idg	4500
<b>111.6</b>	<b>131°</b>	TDZE	<b>1885</b>
Chan 53		Apt Elev	<b>1915</b>

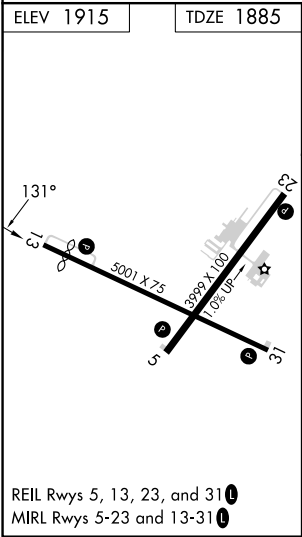
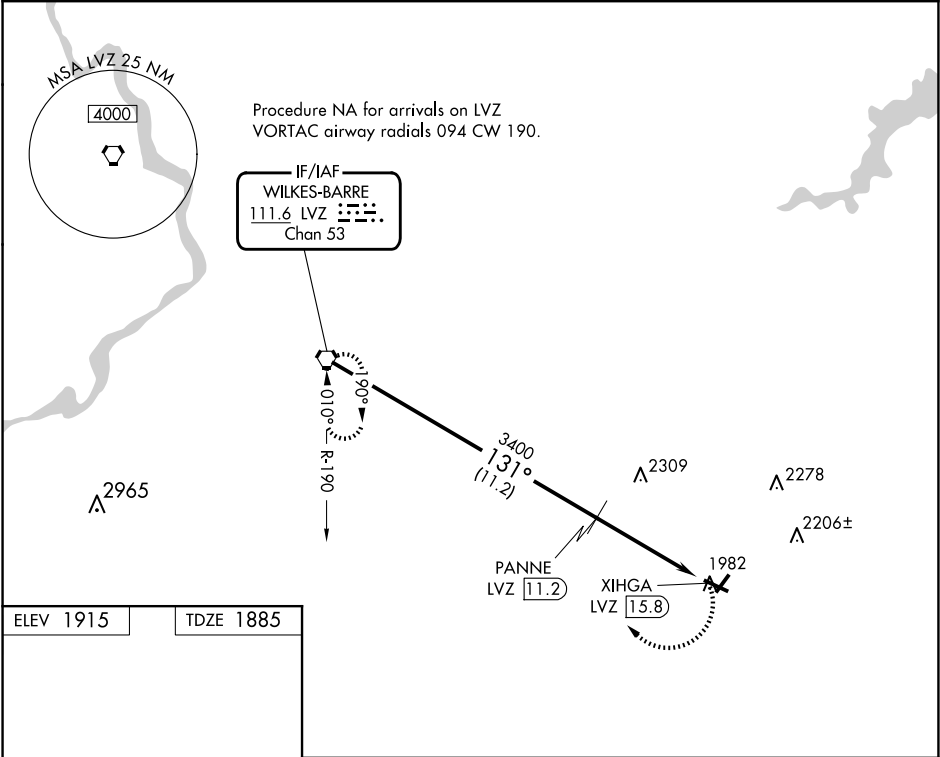
VOR/DME RWY 13

POCONO MOUNTAINS RGNL (MPO)

⚠ Circling Rwy 23 NA at night. Helicopter visibility reduction below  $\frac{3}{4}$  SM NA. When local altimeter setting not received, use Wilkes-Barre/Scranton altimeter setting and increase all MDA 180 feet; increase S-13 Cat B and Circling Cat B visibility  $\frac{1}{4}$  mile, S-13 Cats C/D visibility  $\frac{3}{4}$  mile, and Circling Cats C/D visibility  $\frac{1}{2}$  mile.

MISSED APPROACH: Climbing right turn to 4000 direct LVZ VORTAC and hold.

ASOS	WILKES-BARRE APP CON	CLNC DEL	UNICOM
<b>120.275</b>	<b>126.3 256.7</b>	<b>125.3</b>	<b>122.7 (CTAF) 0</b>



LVZ VORTAC				4000	LVZ
4000				131°	PANNE LVZ 11.2
3400					
11.2 NM				3.03°	XIHGA LVZ 15.8
4.6 NM				TCH 40	
CATEGORY	A	B	C	D	
S-13	2500-1	615 (600-1)	2500-1¾	615 (600-1¾)	
CIRCLING	2500-1	585 (600-1)	2600-2 685 (700-2)	2660-2½ 745 (800-2½)	