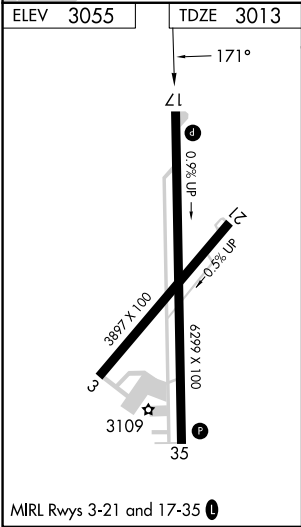
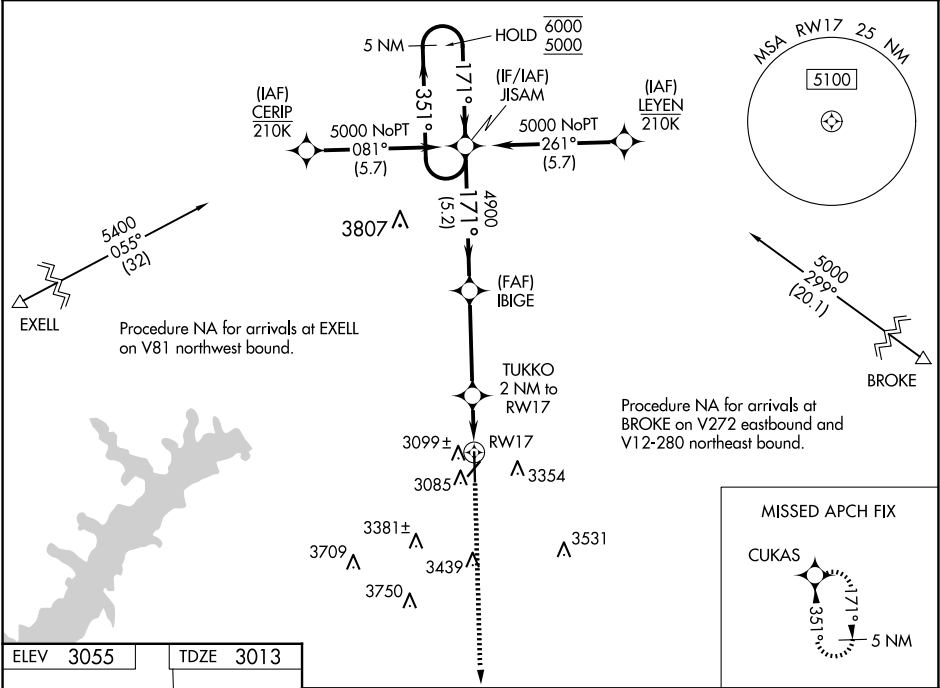


WAAS CH 99442 W17A	APP CRS 171°	Rwy Idg TDZE 3013 Apt Elev 3055
--	------------------------	---

RNAV (GPS) RWY 17
HUTCHINSON COUNTY (BGD)

RNP APCH. ⚠ For uncompensated Baro-VNAV systems, LNAV/VNAV NA below -14°C or above 51°C.		MISSED APPROACH: Climb to 5100 direct CUKAS and hold.
ASOS 118.325	AMARILLO APP CON ★ 119.5 307.0	UNICOM 123.0 (CTAF) 0



5100 CUKAS					
* LNAV only.		TUKKO 2 NM to RW17	IBIGE 4900	JISAM 5 NM Holding Pattern	
RW17		* 1 NM to RW17	* 3700	351° 6000 171° 5000	GP 3.00° TCH 58
1 NM 1 NM 3.8 NM 5.2 NM					
CATEGORY	A	B	C	D	
LPV DA	3263-1 250 (300-1)				
LNAV/VNAV DA	3280-1 267 (300-1)				
LNAV MDA	3360-1 347 (400-1)				
CIRCLING	3620-1 565 (600-1)	3660-1 605 (700-1)	3760-2 705 (800-2)	3760-2¼ 705 (800-2¼)	

SC-2, 10 JUL 2025 to 07 AUG 2025

SC-2, 10 JUL 2025 to 07 AUG 2025