


VOR/DME SWO	APP CRS	Rwy Idg	7401
108.4	178°	TDZE	1000
Chan 21		Apt Elev	1000

VOR RWY 17
STILLWATER RGNL (SWO)

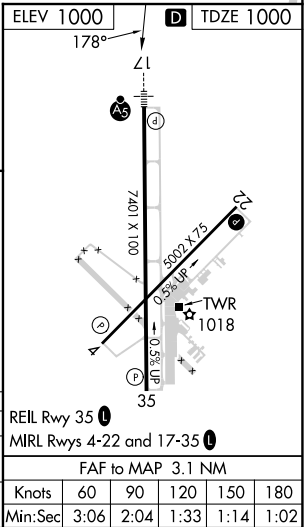
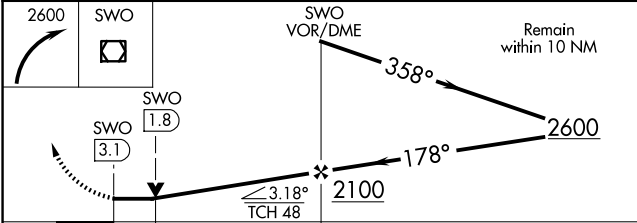
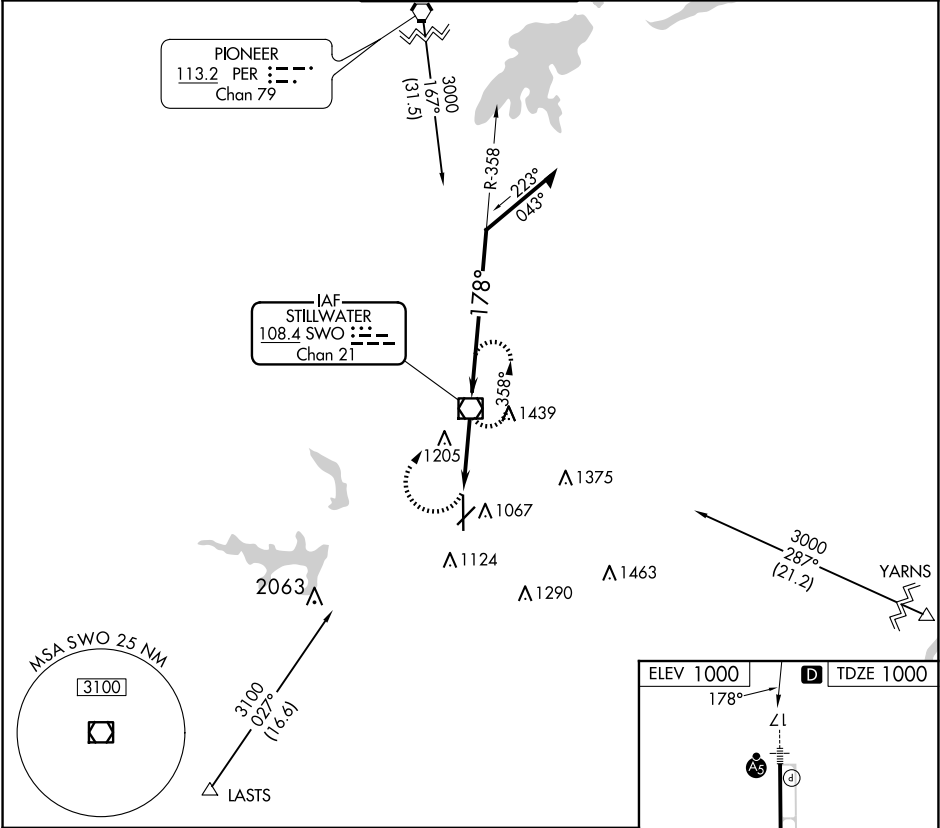
⚠ When local altimeter setting not received, use Ponca City Rgnl altimeter setting and increase all MDA 80 feet and Circling Cat D visibility ½ mile. VDP NA with Ponca City altimeter setting. For inop MALSR increase S-17 Cats A/B visibility to 1 mile. Helicopter visibility reduction below ¾ SM NA.

MALSR



MISSED APPROACH:
Climbing right turn to 2600
direct SWO VOR/DME
and hold.

ASOS 135.725	KANSAS CITY CENTER 127.8 319.1	STILLWATER TOWER ★ 125.35 (CTAF) 0	GND CON 121.6	UNICOM 122.95
------------------------	--	--	-------------------------	-------------------------



CATEGORY	A	B	C	D
S-17	1460-¾ 460 (500-¾)			1460-1 460 (500-1)
CIRCLING	1460-1 460 (500-1)	1520-1½ 520 (600-1½)	1740-2¼ 740 (800-2¼)	

SC-1, 10 JUL 2025 to 07 AUG 2025

SC-1, 10 JUL 2025 to 07 AUG 2025