
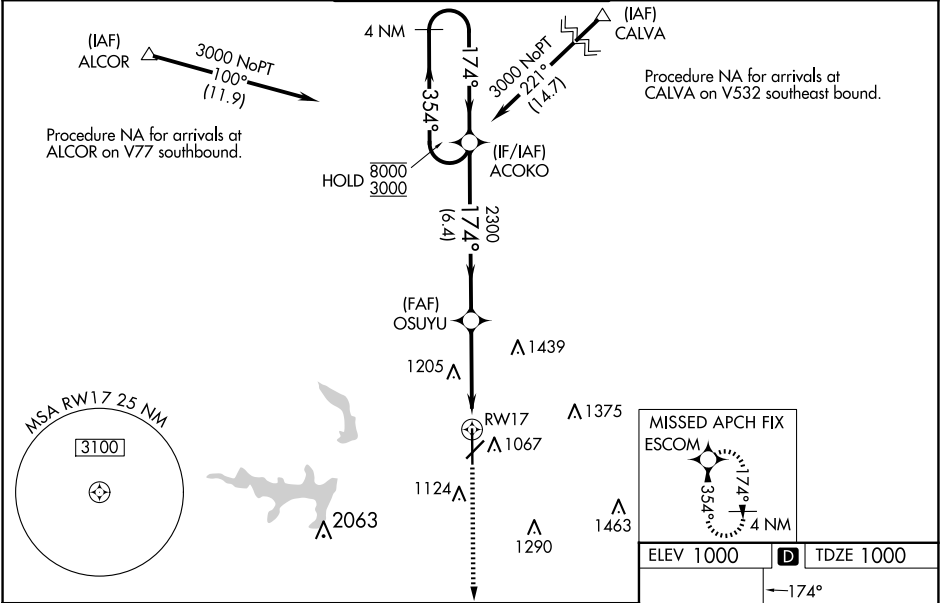


WAAS CH 90108 W17A	APP CRS 174°	Rwy Idg 7401 TDZE 1000 Apt Elev 1000	RNAV (GPS) RWY 17 STILLWATER RGNL (SWO)
--	------------------------	---	---

RNP APCH - GPS.		
<div><div>▼</div><div>▲</div></div> <div>For uncompensated Baro-VNAV systems, LNAV/VNAV NA below -15°C or above 54°C. VDP and Baro-VNAV NA when using Ponca City altimeter setting. For inop ALS when using Ponca City altimeter setting, increase LPV visibility to ¾ SM, LNAV/VNAV visibility to 1 SM, and LNAV Cats C and D visibility to 1¾ SM. When local altimeter setting not received, use Ponca City altimeter setting: increase LPV DA to 1280 feet; increase LNAV/VNAV DA to 1359 feet and all visibilities ¾ SM; increase all MDA 80 feet and visibility LNAV Cats C and D ¼ SM and Circling Cat D ½ SM. For inop ALS, increase LNAV/VNAV visibility to ¾ SM.</div>	MALSR 	MISSED APPROACH: Climb to 3000 direct ESCOM and hold.

ASOS 135,725	KANSAS CITY CENTER 127.8 319.1	STILLWATER TOWER ★ 125.35 (CTAF) 0	GND CON 121.6	UNICOM 122,95
------------------------	--	--	-------------------------	-------------------------



4 NM Holding Pattern				
ACOKO				
8000 ← 354° 3000 → 174°				
GP 3.00° TCH 48				
6.4 NM 2.7 NM 1.2 NM				
CATEGORY	A	B	C	D
LPV DA		1200-½ 200 (200-½)		
LNAV/VNAV DA		1279-½ 279 (300-½)		
LNAV MDA	1440-½ 440 (500-½)		1440-¾ 440 (500-¾)	
CIRCLING	1440-1 440 (500-1)	1460-1 460 (500-1)	1520-1½ 520 (600-1½)	1740-2¼ 740 (800-2¼)

3000 ESCOM

* LNAV only.

* 1.2 NM to RW17

RW17

7401 X 100

5002 X 75

0.5% UP

0.5% UP

35

TWR 1018

REIL Rwy 35

MIRL Rwy 4-22 and 17-35