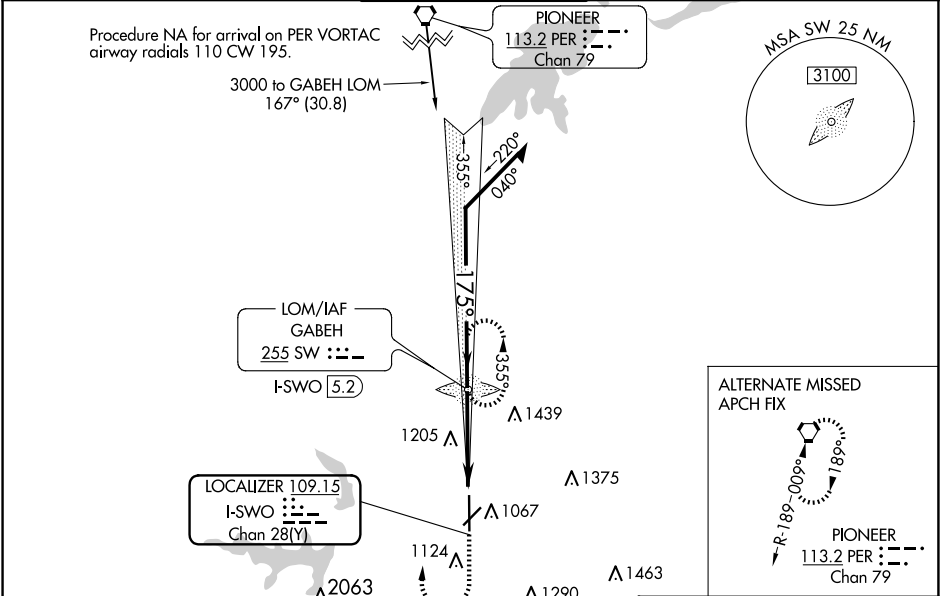


LOC/DME I-SWO 109.15 Chan 28 (Y)	APP CRS 175°	Rwy Idg TDZE Apt Elev	7401 1000 1000
--	------------------------	-----------------------------	---

ILS or LOC RWY 17
STILLWATER RGNL (SWO)

ADF required.	MALSR A5	MISSED APPROACH: Climb to 1500 then climbing right turn to 3200 direct GABEH LOM and hold, continue climb-in-hold to 3200.
---------------	-------------	---

ASOS 135.725	KANSAS CITY CENTER 127.8 319.1	STILLWATER TOWER ★ 125.35 (CTAF) 0	GND CON 121.6	UNICOM 122.95
------------------------	--	---	-------------------------	-------------------------



VGSI and ILS glidepath not coincident (VGSI Angle 3.00/TCH 50).				1500	3200	SW
Remain within 10 NM				GABEH LOM I-SWO 5.2		
GS 3.00° TCH 42				2600	2260	2300
				355°	175°	
				I-SWO 2.7	I-SWO 1.4	
				2.5 NM	1.3	
CATEGORY	A	B	C	D		
S-ILS 17	1200-½		200 (200-½)			
S-LOC 17	1460-½	460 (500-½)	1460-⅞	460 (500-⅞)		
CIRCLING	1460-1 460 (500-1)	1480-1 480 (500-1)	1540-1½ 540 (600-½)	1740-2¼ 740 (800-2¼)		

ELEV 1000	TDZE 1000
174°	
7401 X 100	
5002 X 75	
0.5% UP	
0.5% UP	
35	
TWR 1018	
REIL Rwy 35	
MIRL Rwy 4-22 and 17-35	
FAF to MAP 3.8 NM	
Knots	60 90 120 150 180
Min:Sec	3:48 2:32 1:54 1:31 1:16

SC-1, 10 JUL 2025 to 07 AUG 2025

SC-1, 10 JUL 2025 to 07 AUG 2025