

WAAS CH 82625 W18A	APP CRS 177°	Rwy Idg 5904 TDZE 3125 Apt Elev 3125
--	------------------------	---

RNAV (GPS) RWY 18
GUYMON MUNI (GUY)

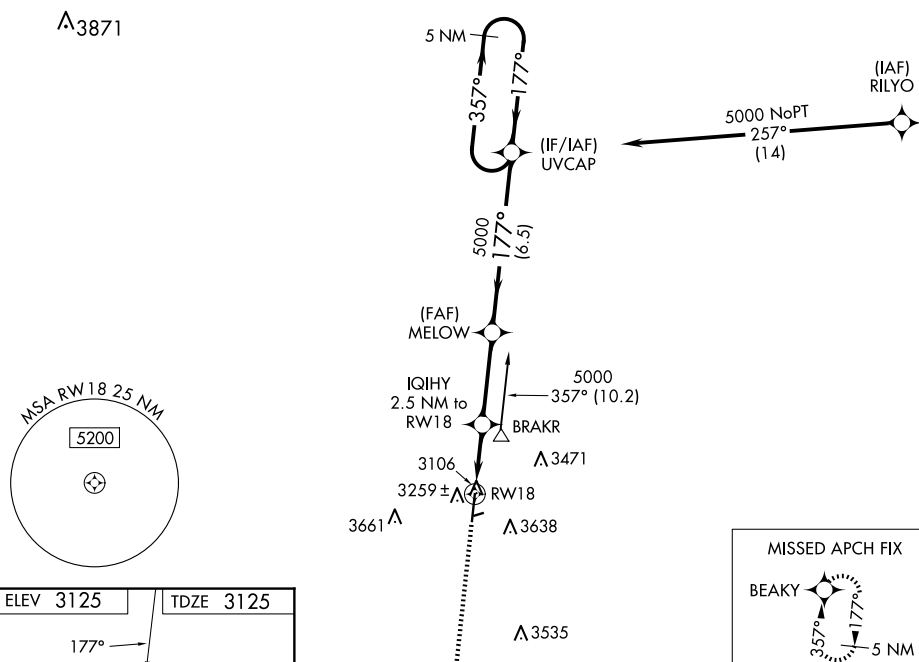
⚠ Baro-VNAV NA when using Liberal altimeter setting. For uncompensated Baro-VNAV systems, LNAV/VNAV NA below -21°C (-5°F) or above 54°C (130°F). Circling NA east of Rwy 18-36. DME/DME RNP-0.3 NA. When local altimeter setting not received, use Liberal altimeter setting: Increase LPV DA to 3488 feet; increase LNAV/VNAV DA to 3564 feet and all visibilities $\frac{1}{8}$ SM; increase all MDAs 120 feet and visibility Cat C $\frac{1}{2}$ SM. Circling NA to Rwy 6 and 24.

ODALS

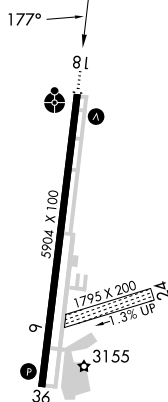


MISSED APPROACH:
Climb to 6000 direct
BEAKY and hold

ASOS	KANSAS CITY CENTER	UNICOM
119.925	134.0 257.625	122.7 (CTAF) 0



ELEV 3125		TDZE 3125
-----------	--	-----------

MIRL Rwy 18-36 **L**



GUYMON, OKLAHOMA

Amdt 1B 15JUL21

36°41'N-101°30'W

GUYMON MUNI (GUY)

RNAV (GPS) RWY 18

6000  BEAKY 		VGS1 and RNAV glidepath not coincident (VGS1 Angle 3.00/TCH 25).	
*LNAV only		MELOW 5000 UVCAP 5 NM Holding Pattern 357° → ← 177° 5000 177° 5000 GP 3.00° TCH 45	
IQIHY 2.5 NM to RW18 *3940 RW18 2.5 NM 3.3 NM 6.5 NM			
CATEGORY	A	B	C
LPV DA	3375-1	250 (300-1)	NA
LNAV/VNAV DA	3451-1	326 (400-1)	NA
LNAV MDA	3520-1	395 (400-1)	NA
CIRCLING	3580-1	455 (500-1)	3980-2½ 855 (900-2½)
			NA