

NDB GUY 275	APP CRS 177°	Rwy Idg 5904 TDZE 3125 Apt Elev 3125	NDB RWY 18 GUYMON MUNI (GUY)
----------------	-----------------	--	---------------------------------

⚠

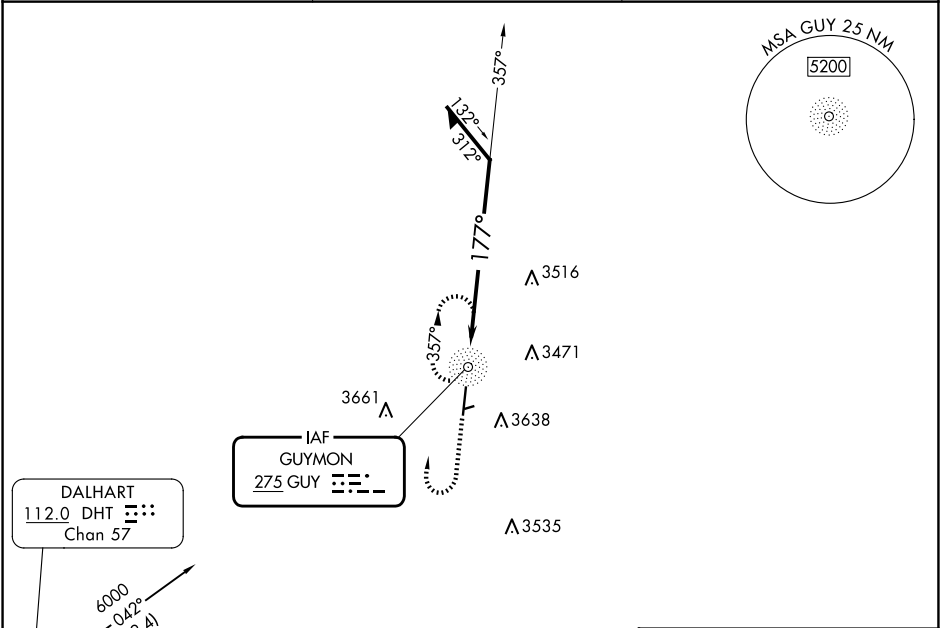
Circling NA to Rwys 6 and 24. Circling NA east of Rwy 18-36. When local altimeter setting not received, use Liberal altimeter setting and increase all MDAs 120 feet and visibility Cats A and C ½ SM. For inop ALS, increase S-18 Cat C visibility to 2½ SM. For inop ALS when using Liberal altimeter setting, inop table does not apply to S-18 Cat C.

ODALS

MISSED APPROACH:

Climb to 5000 then right turn direct GUY NDB and hold.

ASOS 119.925	KANSAS CITY CENTER 134.0 257.865	UNICOM 122.7 (CTAF)
-----------------	-------------------------------------	------------------------



ELEV 3125

TDZE 3125

177°

81

5904 X 100

1795 X 200

1.3% UP

3155

36

MIRL Rwy 18-36

5000

GUY

GUY NDB

357°

177°

5000

Remain within 10 NM

CATEGORY	A	B	C	D
S-18	3900-¾ 775 (800-¾)	3900-1 775 (800-1)	3900-2 775 (800-2)	NA
CIRCLING	3900-1 775 (800-1)	3900-1¼ 775 (800-1¼)	3980-2½ 855 (900-2½)	NA