


WAAS CH 61012 W18A	APP CRS 177°	Rwy Idg TDZE 1016 Apt Elev 1016	6203
--	------------------------	---	-------------

RNAV (GPS) RWY 18
ADA RGNL (ADH)

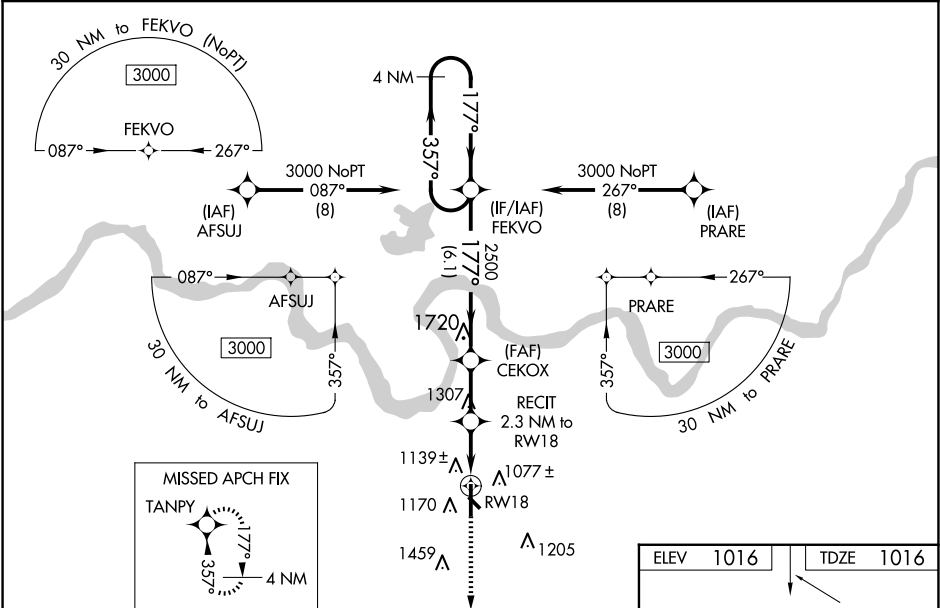
▼ Inop table does not apply to LPV. For uncompensated Baro-VNAV systems, LNAV/VNAV NA below -17°C (2°F) or above 54°C (130°F). Baro-VNAV and VDP NA when using Seminole altimeter setting. Circling Rwy 31 NA at night. Rwy 18 helicopter visibility reduction below ¾ SM NA. DME/DME RNP-0.3 NA. For inop ALS, increase LNAV/VNAV Cats A and B visibility ½ SM. For inop ALS when using Seminole altimeter setting; increase LPV all Cats visibility to 1 SM and LNAV/VNAV all Cats to ½ SM. When local altimeter setting not received, use Seminole altimeter setting: increase LPV DA to 1332 feet, LNAV/VNAV DA to 1386 and all MDA 80 feet. Increase LPV all Cats visibility ½ SM, increase LNAV/VNAV all Cats and LNAV Cat C and D visibility ¼ SM. Increase Circling Cats C/D visibility ½ SM.

ODALS

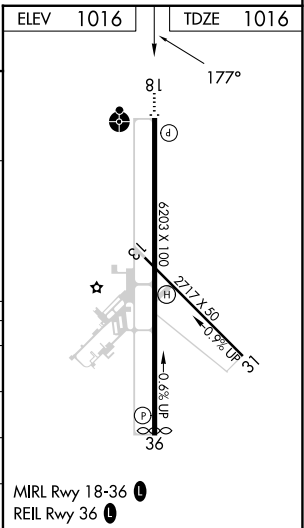


MISSED APPROACH:
Climb to 3000 direct
TANPY and hold.

AWOS-3PT 118.725	FORT WORTH CENTER 132.2 338.35	UNICOM 122.8 (CTAF) 0
----------------------------	--	---------------------------------



4 NM Holding Pattern		VGSI and RNAV glidepath not coincident (VGSI Angle 3.00/TCH 31).		3000	TANPY
FEKVO		CEKOX		RECIT	
3000 357° 177°		2500		2.3 NM to RW18	
GP 3.00° TCH 55		*1800		0.9 NM to RW18	
		RW18			
		6.1 NM		2.2 NM	1.4 NM 0.9 NM
CATEGORY	A	B	C	D	
LPV DA	1266-¾		250 (300-¾)		
LNAV/VNAV DA	1320-7/8		304 (400-7/8)		
LNAV MDA	1400-¾ 384 (400-¾)		1400-1 384 (400-1)		
CIRCLING	1520-1 504 (600-1)		1640-1 624 (700-1)		
			1820-2¼ 804 (900-2¼)		
			1820-2½ 804 (900-2½)		



SC-1, 10 JUL 2025 to 07 AUG 2025

SC-1, 10 JUL 2025 to 07 AUG 2025