

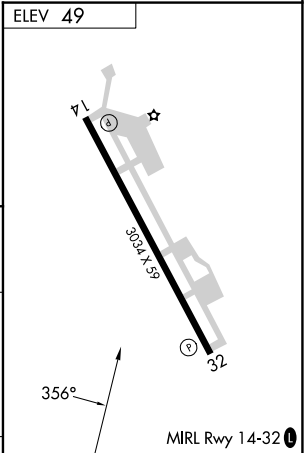
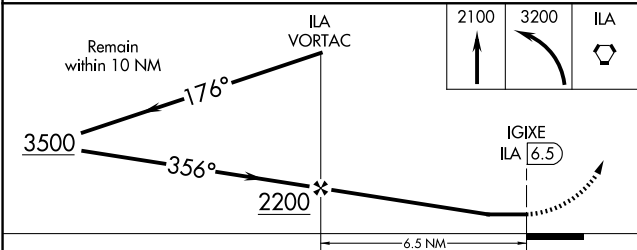
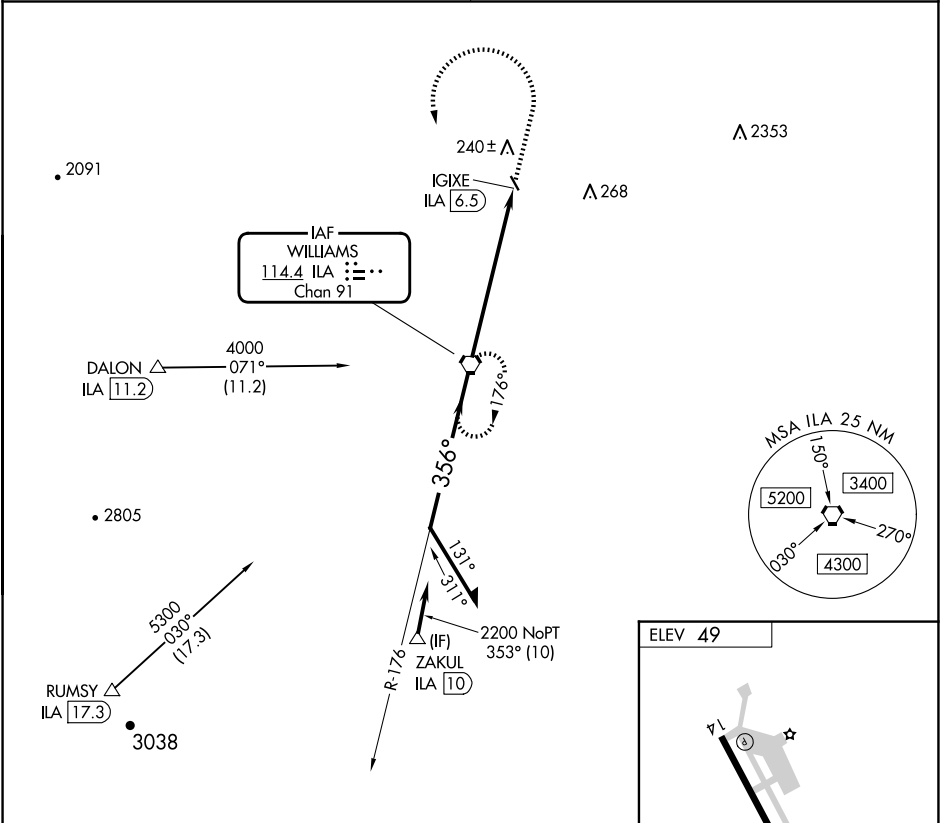
VORTAC ILA <b>114.4</b> Chan <b>91</b>	APP CRS <b>356°</b>	Rwy Ldg TDZE Apt Elev <b>49</b>	N/A N/A
--	------------------------	--	------------

VOR-A

COLUSA COUNTY (008)

DME required.	MISSED APPROACH: Climb to 2100 then climbing left turn to 3200 direct ILA VORTAC and hold.
<div><div>NA</div><div>Circling Rwy 32 NA at night. Obtain local altimeter setting on CTAF; when not received, use Sacramento Intl altimeter setting and increase all MDAs 100 feet and visibility Cat C ½ SM.</div></div>	

OAKLAND CENTER <b>132.2 350.3</b>	UNICOM <b>122.8 (CTAF) 0</b>
--------------------------------------	---------------------------------



CATEGORY	A	B	C	D	FAF to MAP 6.5 NM
CIRCLING	600-1	551 (600-1)	620-1½ 571 (600-1½)	NA	Knots 60 90 120 150 180 Min:Sec 6:30 4:20 3:15 2:36 2:10