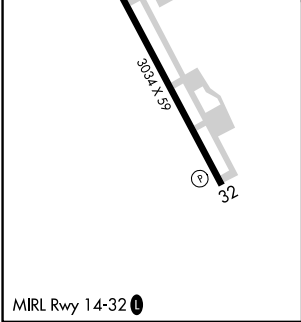
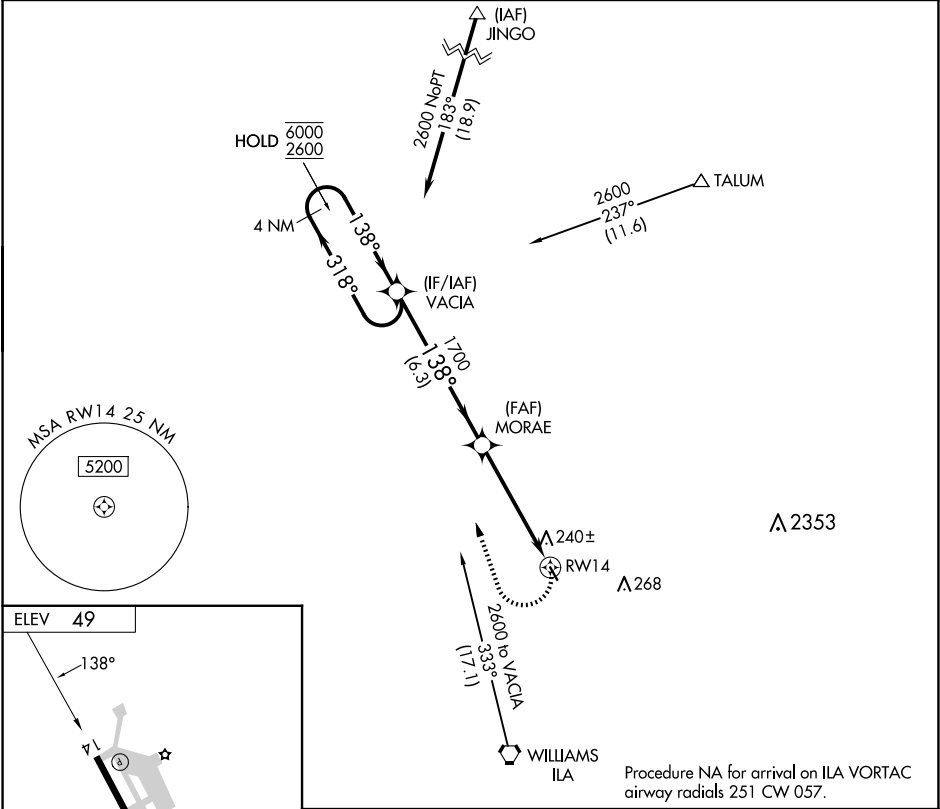


APP CRS	Rwy Ldg	N/A
138°	TDZE	N/A
	Apt Elev	49

RNAV (GPS)-B  
COLUSA COUNTY (008)

RNP APCH - GPS.	MISSED APPROACH: Climbing right turn to 2600 direct VACIA and hold.
<div><div>▼</div><div>▲ NA</div></div> <div>Circling Rwy 32 NA at night. Rwy 14, 32 helicopter visibility reduction below 1 SM NA. Obtain local altimeter setting on CTAF; when not received, use Sacramento Intl altimeter setting and increase all MDAs 100 feet and Cat C visibility ½ SM.</div>	

OAKLAND CENTER 132.2 350.3	UNICOM 122.8 (CTAF) 0
-------------------------------	--------------------------



VGSi and descent angles not coincident (VGSi Angle 3.00/TCH 25).			
4 NM Holding Pattern			
6000 ← 318° 2600 → 138°			
VACIA			
MORAE			
3.00° TCH 50			
RW14			
6.3 NM			
5 NM			
CATEGORY	A	B	C
620-1 551 (600-1)			
620-1 571 (600-1 1/2)			
NA			