

WAAS CH 82638 W20A	APP CRS 200°	Rwy Idg TDZE Apt Elev	6000 309 311
--	------------------------	-----------------------------	---

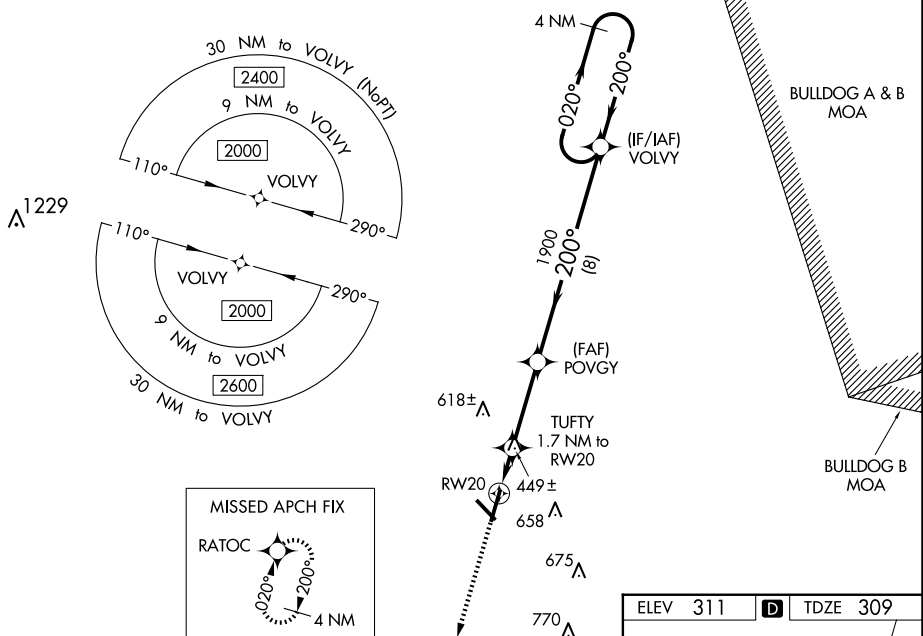
RNAV (GPS) RWY 20
W H 'BUD' BARRON (DBN)

▼ Night landing: Rwy 32 NA. For uncompensated Baro-VNAV systems, LNAV/VNAV NA below -15°C (5°F) or above 54°C (130°F). Baro-VNAV and VDP NA when using Vidalia altimeter setting.

▲ DME/DME RNP-0.3 NA. Helicopter visibility reduction below $\frac{3}{4}$ SM NA. When local altimeter setting not received, use Vidalia altimeter setting; increase LPV DA to 681 feet and LNAV/VNAV DA to 693 feet and all MDA 100 feet; increase LPV all Cats visibility $\frac{1}{4}$ mile and LNAV/VNAV all Cats visibility $\frac{3}{8}$ mile and LNAV Cat C/D and Circling Cat C/D visibility $\frac{1}{4}$ mile.

MISSED APPROACH:
Climb to 2000 direct
RATOC and hold.

AWOS-3 118.425	ATLANTA APP CON ★ 124.2 279.6	UNICOM 122.7 (CTAF) 0
--------------------------	---	---------------------------------



The diagram illustrates a 4 NM Holding Pattern. Key features include:

- Navigation Aids:** 2000 (VORTAC), RATOC (VORTAC), VOLVY (VORTAC), POVGY (VORTAC), TUFTY (VORTAC), and RW20 (VORTAC).
- Distances:** 1.1 NM, 0.6 NM, 3.2 NM, and 8 NM.
- Angles:** 200° and 020°.
- Altitudes:** 1900 and 1900 (with a 200° turn).
- GP 3.00° TCH 31**

