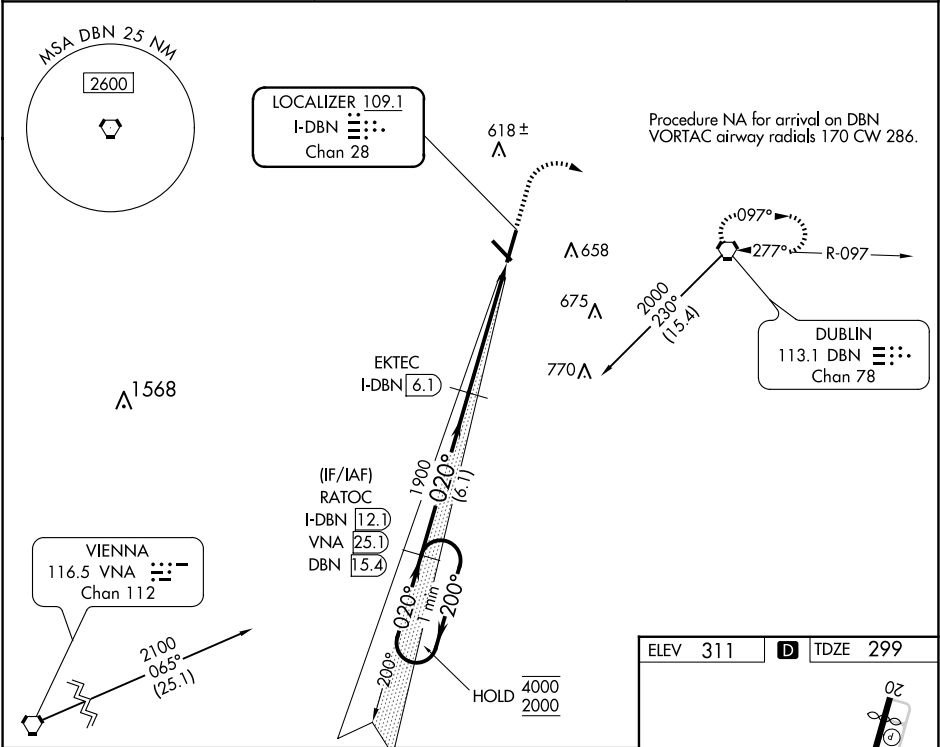


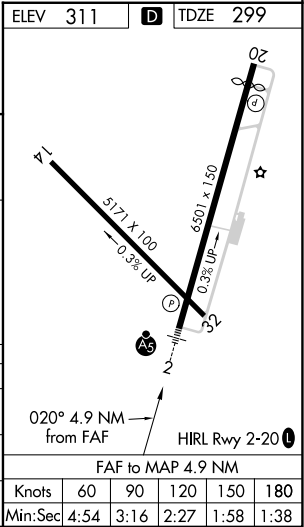
LOC/DME I-DBN	APP CRS	Rwy ldg	6300
109.1	020°	TDZE	299
Chan 28		Apt Elev	311

ILS or LOC RWY 2
W H 'BUD' BARRON (DBN)

DME required.		MALSR	MISSED APPROACH: Climb to 1000 then climbing right turn to 2000 direct DBN VORTAC and hold.
<div><div></div><div></div></div> <div>Circling Rwy 32 NA at night. For inop ALS, increase S-LOC 2 Cats C/D visibility to 1½ SM.</div>		<div><div></div><div></div></div>	
AWOS-3 118.425	ATLANTA APP CON ★ 124.2 279.6	UNICOM 122.7 (CTAF) 0	



One Minute Holding Pattern		VGSI and ILS glidepath not coincident (VGSI Angle 3.00/TCH 31).		1000	2000	DBN
4000 ← 200° 2000 → 020°		RATOC I-DBN 12.1		EKTCC I-DBN 6.1		
GS 3.00° TCH 42		020°		1900		
		1900		I-DBN 2.5		I-DBN 1.2
				6.1 NM		3.6 NM
				1.4 NM		
CATEGORY	A		B	C	D	
S-ILS 2	499-½ 200 (200-½)					
S-LOC 2	760-½ 461 (500-½)		760-1 461 (500-1)			
CIRCLING	760-1 449 (500-1)	780-1 469 (500-1)	940-1¾ 629 (700-1¾)		980-2 669 (700-2)	



SE-4, 10 JUL 2025 to 07 AUG 2025

SE-4, 10 JUL 2025 to 07 AUG 2025