

APP CRS
214°

Rwy Idg
TDZE
Apt Elev

5999
625
625

RNAV (GPS) RWY 21

MENOMINEE RGNL (MNM)

RNP APCH.

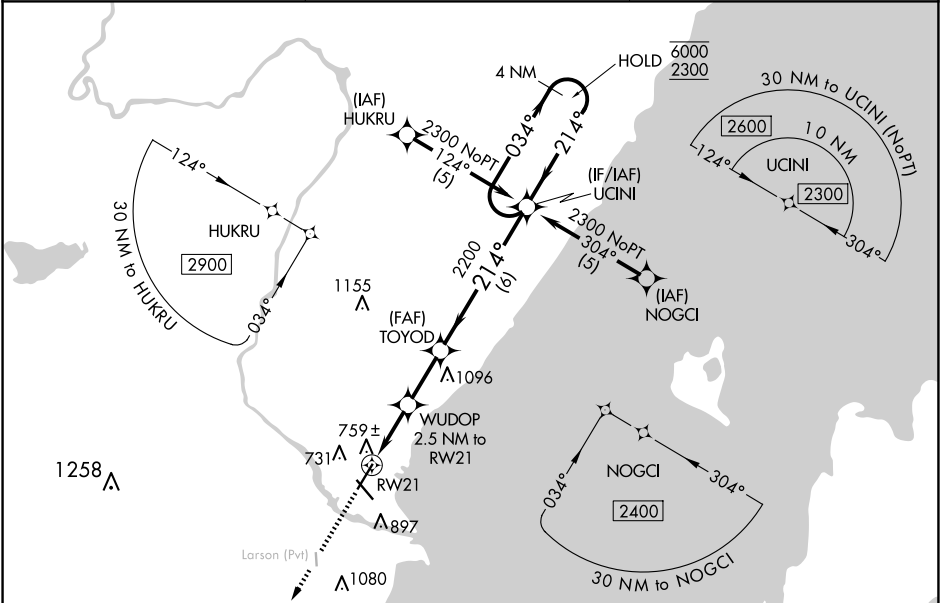
▼

⚠

Circling Rwy 14, 32 NA at night. Rwy 21 helicopter visibility reduction below ¾ SM NA. VDP NA when using Sturgeon Bay altimeter setting. When local altimeter setting not received, use Sturgeon Bay altimeter setting and increase all MDA 60 feet, increase LNAV Cat C/D and Circling Cat C/D visibility ¼ SM.

MISSED APPROACH:
Climb to 2200 direct OMUPE and hold.

| | | |
|--------------------|------------------------------------|--------------------------|
| AWOS-3PT 121.45 | GREEN BAY APP CON ★ 120.3 338.2 | UNICOM 122.8 (CTAF) 0 |
|--------------------|------------------------------------|--------------------------|



ELEV 625 TDZE 625

MISSED APCH FIX
OMUPE

214°

034°

214°

4 NM

2200 OMUPE

4 NM Holding Pattern

UCINI

034° → 6000

← 214° 2300

WUDOP 2.5 NM to RW21

TOYOD

1.1 NM to RW21

1.4 NM

2.3 NM

6 NM

1460

2200

3.04° TCH 42

| CATEGORY | A | B | C | D |
|----------|--------|-------------|--------------|--------------|
| LNAV MDA | 1020-1 | 395 (400-1) | 1020-1½ | 395 (400-1½) |
| CIRCLING | 1200-1 | 575 (600-1) | 1200-1½ | 1380-2½ |
| | | | 575 (600-1½) | 755 (800-2½) |