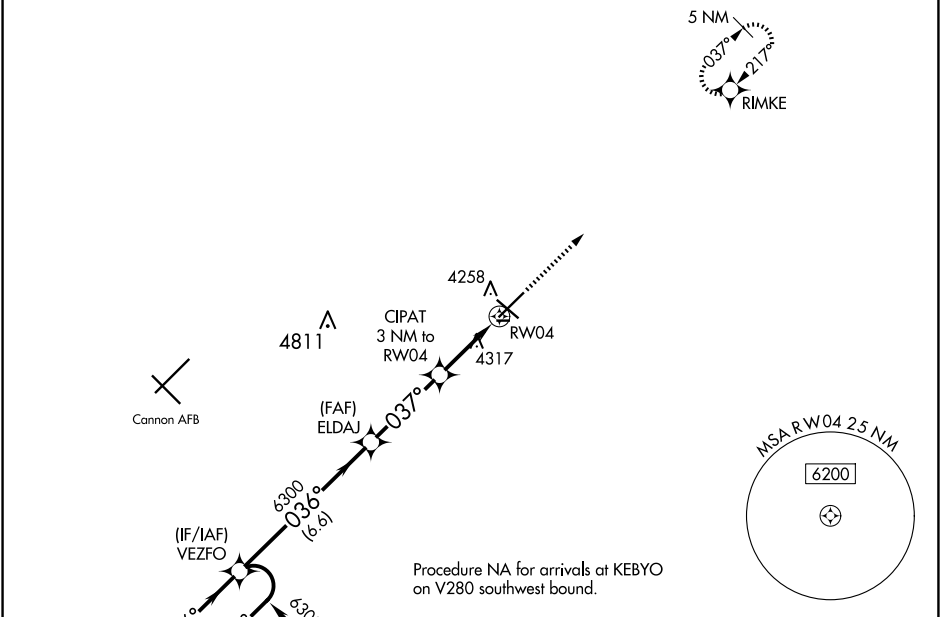


WAAS CH 97300 W04A	APP CRS 037°	Rwy Ldg TDZE 4205 Apt Elev 4216
--	------------------------	---

RNAV (GPS) RWY 4

CLOVIS RGNL (CVN)

RNP APCH - GPS.		MALSR	MISSED APPROACH: Climb to 6000 direct RIMKE and hold.
⚠ For uncompensated Baro-VNAV systems, LNAV/VNAV NA below -23°C or above 49°C. For inop ALS, increase LNAV/VNAV all Cats visibility to ¾ SM. Circling NA to Rwy 8 and 26.		AS	
AWOS-3PT 135.375	CANNON APP CON 118.425 352.1	CLNC DEL 119.0	UNICOM 122.8 (CTAF) 0



7 NM Holding Pattern

VEZFO

ELDAJ 6300

CIPAT 3 NM to RW04

1.2 NM to RW04

6000

RIMKE

GP 3.00° TCH 53

6300

5200

6.6 NM

3.4 NM

1.8 NM

1.2

CATEGORY	A	B	C	D
LPV DA		4405- $\frac{1}{2}$	200 (200- $\frac{1}{2}$)	
LNAV/VNAV DA		4455- $\frac{1}{2}$	250 (300- $\frac{1}{2}$)	
LNAV MDA	4640- $\frac{1}{2}$	435 (500- $\frac{1}{2}$)	4640- $\frac{3}{4}$	435 (500- $\frac{3}{4}$)
C CIRCLING	4680-1	464 (500-1)	4700-1 $\frac{1}{2}$ 484 (500-1 $\frac{1}{2}$)	4820-2 604 (700-2)

ELEV 4216

TDZE 4205

7200 X 150

5697 X 100

2442 X 75 Ultralight Rwy

0.5% UP

0.4% UP

0.5% UP

037°

REIL Rwy 12 and 30 **1**
MIRL Rwy 4-22 and 12-30 **1**