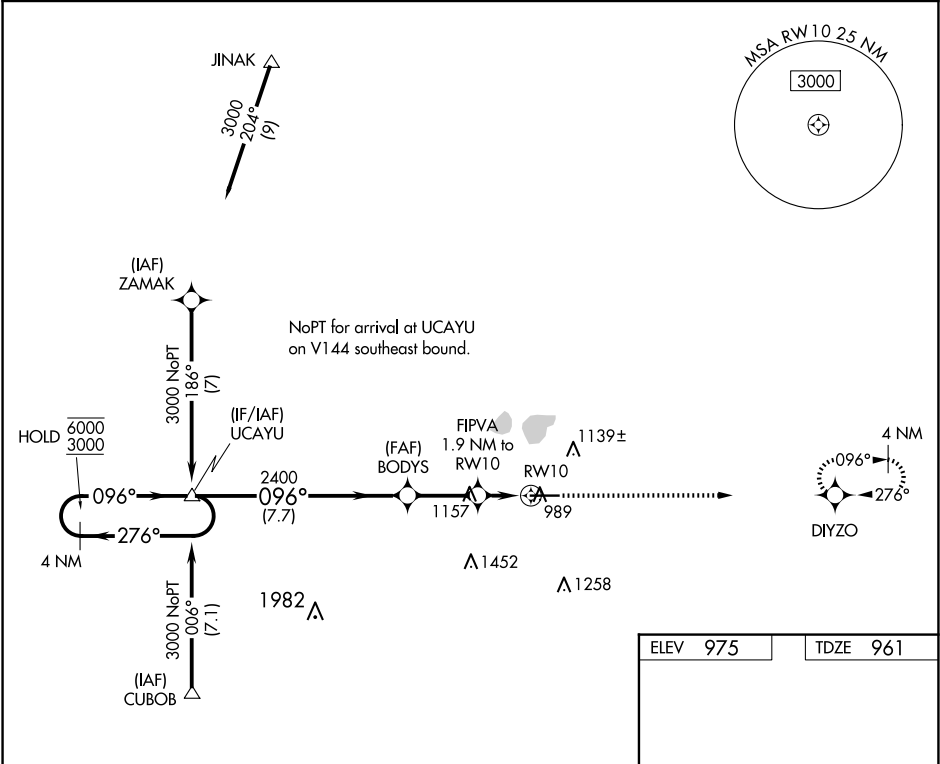


WAAS CH 65816 W10A	APP CRS 096°	Rwy Idg TDZE Apt Elev	6000 961 975
--	------------------------	-----------------------------	---

RNAV (GPS) RWY 10

LIMA ALLEN COUNTY (AOH)

RNP APCH.		MISSED APPROACH: Climb to 3000 direct DIYZO and hold.
Rwy 10 helicopter visibility reduction below ¾ SM NA. For uncompensated Baro-VNAV systems, LNAV/VNAV NA below -16°C or above 54°C.		
ASOS 128.725	COLUMBUS APP CON 121.825 323.15	UNICOM 122.7 (CTAF) 0



4 NM Holding Pattern		ELEV 975		TDZE 961	
GP 3.00° TCH 45		DIYZO		3000	
6000 ← 276°		BODYD 2400		FIPVA 1.9 NM to RWY 10	
3000 → 096°		*1580		*1.3 NM to RWY 10	
7.7 NM		2.5 NM		0.6	
CATEGORY	A	B	C	D	
LPV DA	1211-1		250 (300-1)		
LNAV/VNAV DA	1272-1		311 (300-1)		
LNAV MDA	1420-1 459 (500-1)		1420-1⅓ 459 (500-1⅓)		

EC-2, 10 JUL 2025 to 07 AUG 2025

EC-2, 10 JUL 2025 to 07 AUG 2025