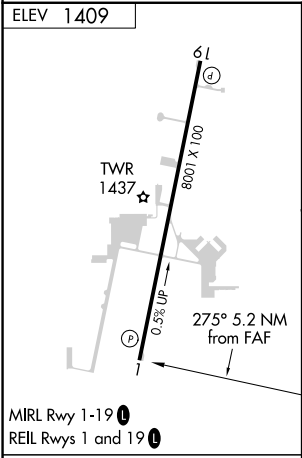
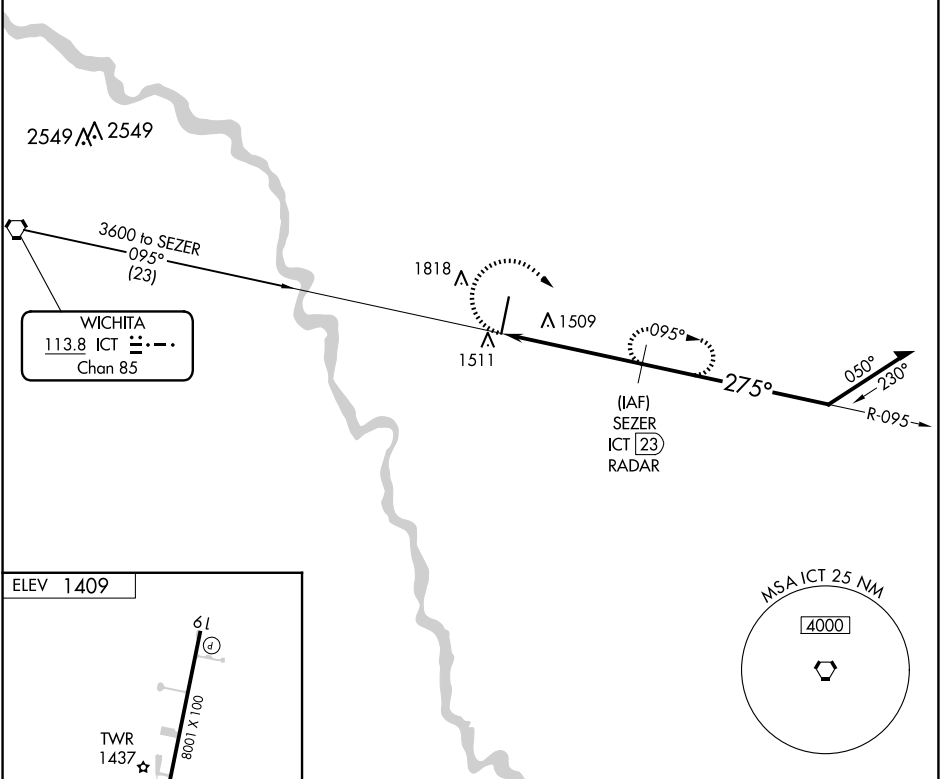





VORTAC ICT 113.8 Chan 85	APP CRS 275°	Rwy Idg TDZE Apt Elev 1409	N/A N/A 1409
--	------------------------	--	---------------------------

VOR-B
BEECH FACTORY (BEC)

NA Obtain local altimeter setting on CTAF; when not received, use Wichita Dwight D Eisenhower Ntl altimeter setting and increase all MDA 40 feet and increase Cat C and D visibility ¼ mile.		MISSED APPROACH: Climbing right turn to 3000 on ICT VORTAC R-095 to SEZER/ICT 23 DME/RADAR and hold.		
AWOS-3PT 119.45	WICHITA APP CON 134.8 269.1	BEECH TOWER ★ 126.8 (CTAF) 0 313.6	GND CON 121.7	CLNC DEL 125.0 (When tower closed)
			UNICOM 122.95	

RADAR or DME REQUIRED



<div>3000</div> <div>SEZER ICT 23 RADAR</div>		<div>SEZER</div> <div>ICT 23 RADAR</div> <div>Remain within 10 NM</div>		
<div><div>ICT 17.8</div><div></div></div> <div>095°</div> <div>275°</div> <div>3000</div> <div>2900</div> <div>5.2 NM</div>				
CATEGORY	A	B	C	D
 CIRCLING	1840-1 431 (500-1)	2120-1 711 (800-1)	2120-2 711 (800-2)	2120-2¼ 711 (800-2¼)

NC-2, 10 JUL 2025 to 07 AUG 2025

NC-2, 10 JUL 2025 to 07 AUG 2025