

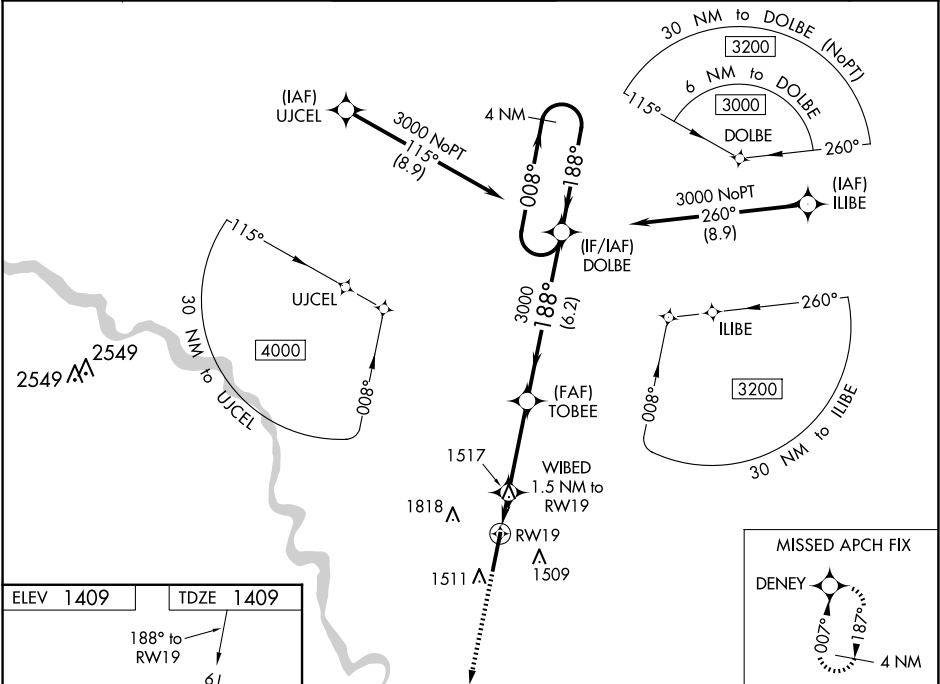
WAAS CH <b>45931</b> <b>W19A</b>	APP CRS <b>188°</b>	Rwy Idg TDZE <b>1409</b> Apt Elev <b>1409</b>
--	------------------------	---

RNAV (GPS) RWY 19  
BEECH FACTORY (BEC)

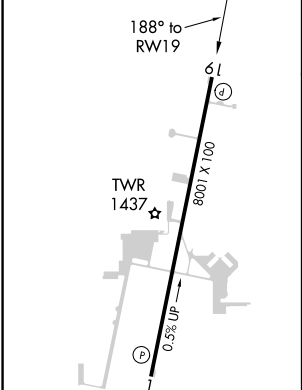
**NA** For uncompensated Baro-VNAV systems, LNAV/VNAV NA below -17°C (2°F) or above 54°C (130°F). DME/DME RNP-0.3 NA. Obtain local altimeter setting on CTAF; when not received, use Wichita Dwight D Eisenhower Ntl altimeter setting and increase all DA 36 feet and all MDA 40 feet; increase LPV all Cats and LNAV/VNAV all Cats visibility and LNAV Cat C and D visibility ¼ mile and Circling Cat C and D visibility ¼ mile. Baro-VNAV NA with Wichita Dwight D Eisenhower Ntl altimeter setting. Helicopter visibility reduction below ¾ SM NA.

**MISSED APPROACH:**  
Climb to 3000 direct DENEY and hold.

AWOS-3PT <b>119.45</b>	WICHITA APP CON <b>134.8 269.1</b>	BEECH TOWER ★ <b>126.8 (CTAF) 0 313.6</b>	GND CON <b>121.7</b>	CLNC DEL <b>125.0</b> (When tower closed)	UNICOM <b>122.95</b>
---------------------------	---------------------------------------	--	-------------------------	---	-------------------------



ELEV <b>1409</b>	TDZE <b>1409</b>
------------------	------------------



MIRL Rwy 1-19  
REIL Rwy 1 and 19

	3000	DENEY	TOBEE	DOLBE	4 NM Holding Pattern
			WIBED 1.5 NM to RWY 19	3000	008° → 3000 ← 188°
			1920*		GP 3.00° TCH 45
	1.5 NM	3.4 NM	6.2 NM		
CATEGORY	A	B	C	D	
LPV DA		1659-¾	250 (300-¾)		
LNAV/VNAV DA		1659-¾	250 (300-¾)		
LNAV MDA		1780-1	371 (400-1)		
CIRCLING	1820-1 411 (500-1)	2120-1 711 (800-1)	2120-2 711 (800-2)	2120-2½ 711 (800-2½)	