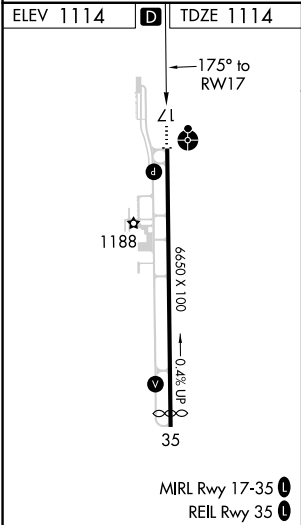
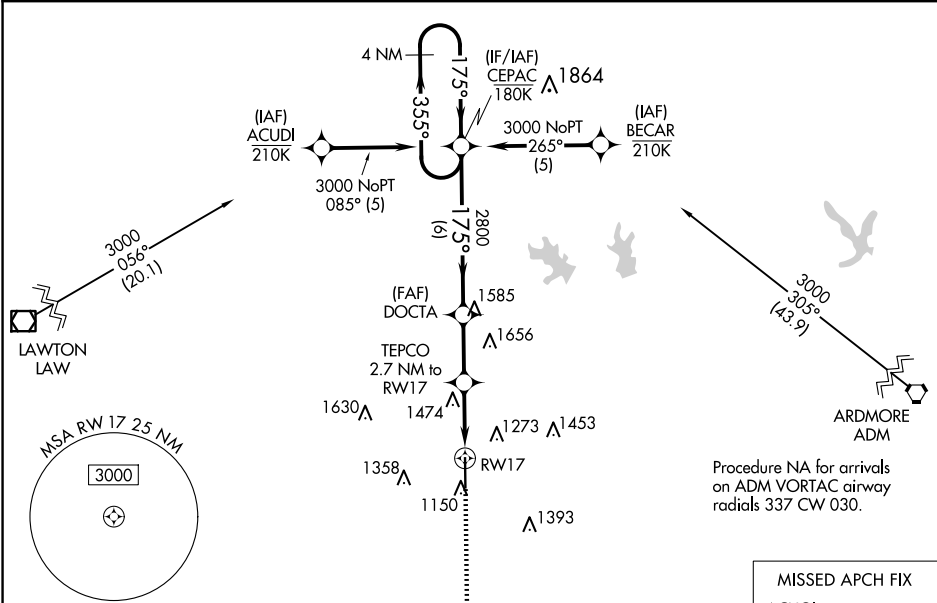


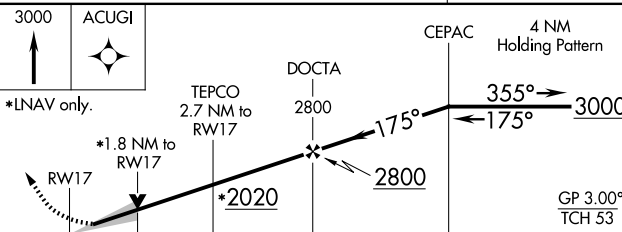



WAAS CH 93619 W17A	APP CRS 175°	Rwy Idg 6325 TDZE 1114 Apt Elev 1114
--	------------------------	---

RNAV (GPS) RWY 17
HALLIBURTON FLD (DUC)

RNP APCH. For uncompensated Baro-VNAV systems, LNAV/VNAV NA below -17°C or above 54°C. Inop table does not apply to LPV all Cats, LNAV/VNAV all Cats, LNAV Cats C/D.		ODALS 	MISSED APPROACH: Climb to 3000 direct ACUGI and hold.
AWOS-3 119.075	FORT SILL APP CON 118.6 290.375	CLNC DEL 118.4	UNICOM 122.8 (CTAF) 0



				
<p>*LNAV only.</p> 		<p>GP 3.00° TCH 53</p>		
CATEGORY	A	B	C	D
LPV DA	1314- ³ / ₄		200 (200- ³ / ₄)	
LNAV/ VNAV	1806-2 ¹ / ₂		692 (700-2 ¹ / ₂)	
LNAV MDA	1740- ³ / ₄ 626 (700- ³ / ₄)		1740-1 ³ / ₄ 626 (700-1 ³ / ₄)	
 CIRCLING	1740-1 626 (700-1)		1780-2 ¹ / ₄ 666 (700-1 ³ / ₄) 1780-2 666 (700-2)	

SC-1, 10 JUL 2025 to 07 AUG 2025

SC-1, 10 JUL 2025 to 07 AUG 2025