

VOR/DME EHK	APP CRS	Rwy Idg	8653
117.3	177°	TDZE	5605
Chan 120		Apt Elev	5622

VOR RWY 20
CEDAR CITY RGNL (CDC)

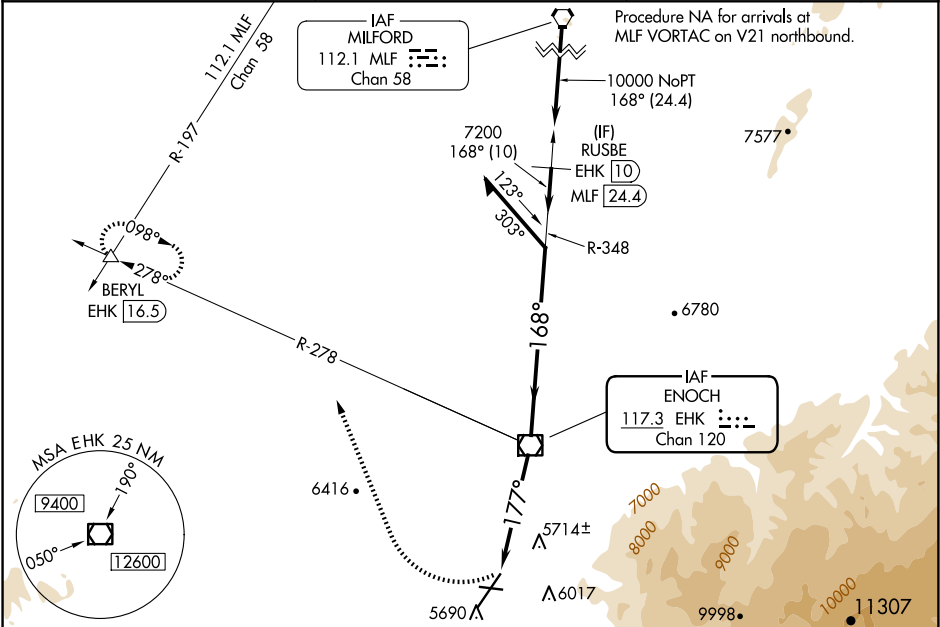
⚠ Circling NA southeast of Rwy 2-20.
For inop ALS S-20* increase Cat C/D
visibility to 1½ SM.

MALSR

A5

MISSED APPROACH: Climbing right turn to 11500 on heading 322° and on EHK VOR/DME R-278 to BERYL INT/EHK 16.5 DME and hold, continue climb-in-hold to 11500.
*Missed approach requires minimum climb of 247 feet per NM to 7500.

ASOS 119.025	SALT LAKE CITY CENTER 125.575 379.275	UNICOM 123.0 (CTAF)
-----------------	--	------------------------



ELEV 5622 **D** TDZE 5605

177°

4822 X 60
0.9% UP

8653 X 150
0.7% UP

HIRL Rwy 2-20 **1**
MIRL Rwy 8-26 **1**
REIL Rwys 2, 8 and 26 **1**

FAF to MAP 4.8 NM

Knots	60	90	120	150	180
Min:Sec	4:48	3:12	2:24	1:55	1:36

11500	EHK R-278	BERYL	EHK VOR/DME 10800	Remain within 10 NM
hdg 322°			348°	
	EHK 4.8	EHK 3.6	3.07° TCH 50	168°
			177°	8700
			7200	
	1.1 NM	3.6 NM		
CATEGORY	A	B	C	D
S-20*	6020-½ 415 (400-½)		6020-¾ 415 (400-¾)	
S-20	6300-½ 695 (700-½)		6300-1½ 695 (700-1½)	
C CIRCLING	6300-1 678 (700-1)		6300-2 678 (700-2)	6300-2¼ 678 (700-2¼)