

CEDAR CITY, UTAH

AL-5139 (FAA)

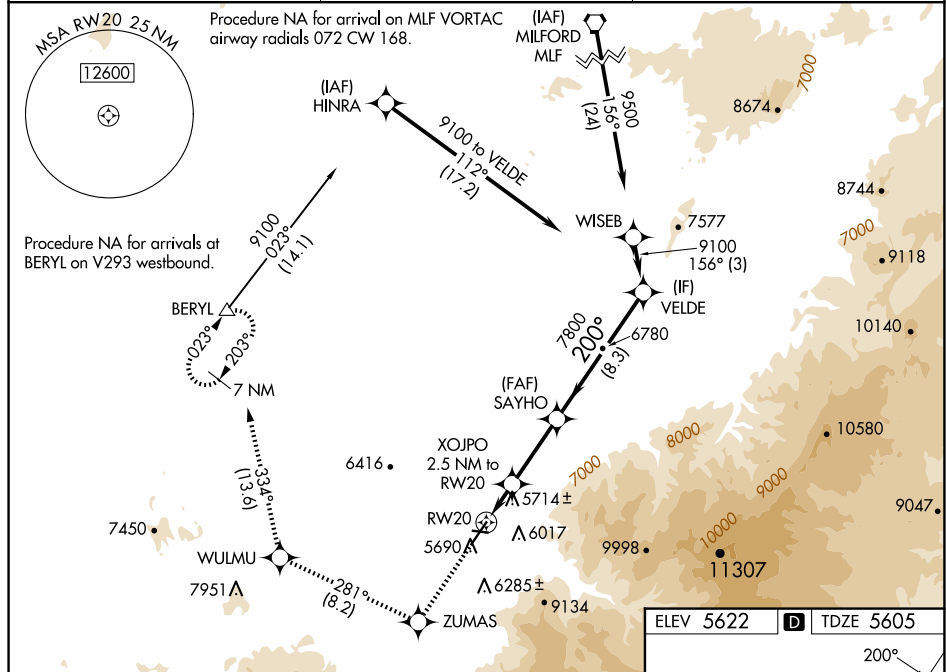
25051

WAAS CH 72640 W20A	APP CRS 200°	Rwy Idg 8653 TDZE 5605 Apt Elev 5622
--	------------------------	---

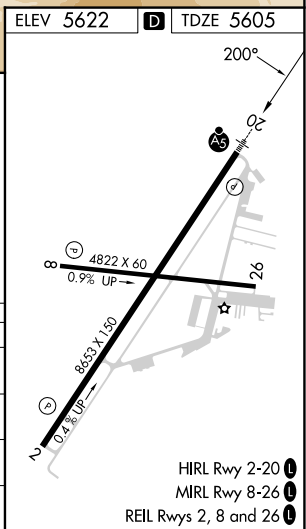
RNAV (GPS) RWY 20
CEDAR CITY RGNL (CDC)

<p>RNP APCH.</p> <p>V A</p> <p>Circling NA east of Rwy 2-20. Baro-VNAV NA. For inop ALS, increase LNAV/VNAV all Cats visibility to 1% SM and LNAV Cats C/D visibility to 1% SM.</p>	<p>MALSR</p> <p>AS</p>	<p>MISSED APPROACH: Climb to 9800 direct ZUMAS and on track 281° to WULMU and on track 334° to BERYL and hold.</p>
---	-------------------------------	--

ASOS 119,025	SALT LAKE CITY CENTER 125,575 379,275	UNICOM 123.0 (CTAF) 0
------------------------	---	---------------------------------



9800 ↑	ZUMAS ✱ tr 281°	WULMU ✱	tr 334°	BERYL △	SAYHO 7800	VELDE 9100
*INAV only						
CATEGORY	A		B		C	D
LPV DA			5825-½		220 (300-½)	
INAV/ VNAV	DA			6015-¾		410 (400-¾)
INAV MDA	6180-½		575 (600-½)		6180-1¼	575 (600-1¼)
C CIRCLING	6180-1		558 (600-1)		6180-15⁄8 558 (600-15⁄8)	6180-2 558 (600-2)



CEDAR CITY, UTAH
Amdt 2A 16JUN22

37°42'N-113°06'W

CEDAR CITY RGNL (CDC)
RNAV (GPS) RWY 20

SW-4, 10 JUL 2025 to 07 AUG 2025