

LOC I-ECC <u>110.1</u>	APP CRS 200°	Rwy Idg 8653 TDZE 5605 Apt Elev 5622
----------------------------------	------------------------	---

ILS or LOC RWY 20
CEDAR CITY RGNI (CDC)

DME required.

T **A** **NA** XOJPO fix minimums (Dual VOR receivers required): For inop ALS, increase S-LOC 20 Cats C/D visibility to 1 $\frac{3}{8}$ SM. For inop ALS, increase S-LOC 20 Cats C/D visibility to 2 $\frac{1}{2}$ SM.
#For inop ALS, increase S-LLS 20 visibility all Cats to 1 SM

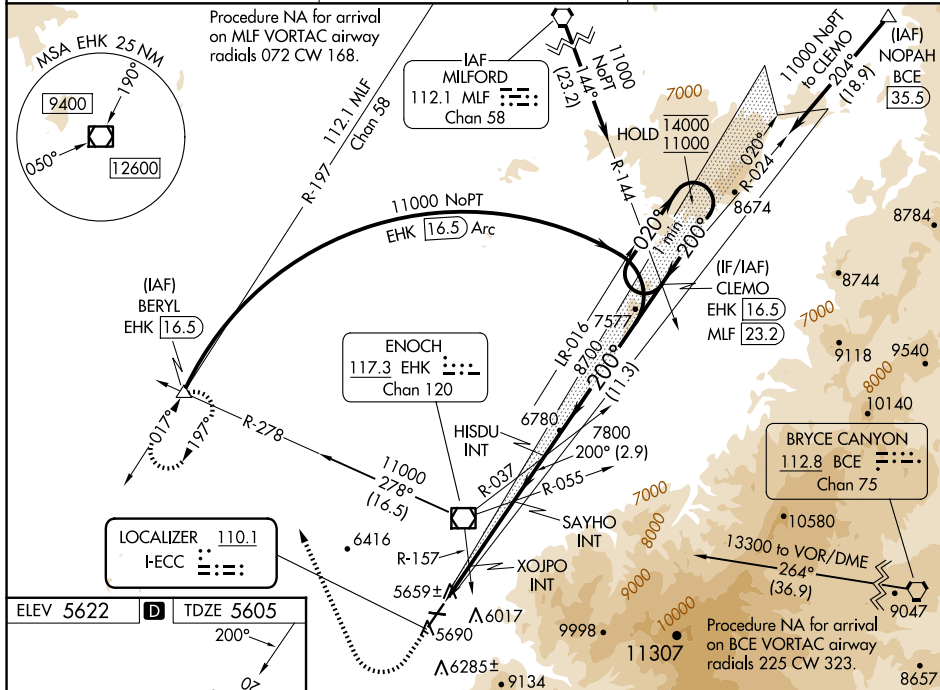
MALSR



MISSED APPROACH: Climb to 6200 then climbing right turn to 10000 on heading 322° and on EHK R-278 to BERYL INT/EHK 16.5 DME and hold, continue climb-in-hold to 10000.

† Missed approach requires minimum climb of 210 feet per NM to 7300.

ASOS 119.025	SALT LAKE CITY CENTER 125.575 379.275	UNICOM 123.0 (CTAF) 0
------------------------	---	---------------------------------



FAF to MAP 6.7 NM

Knots	60	90	120	150	180
Min:Sec	6:42	4:28	3:21	2:41	2:14