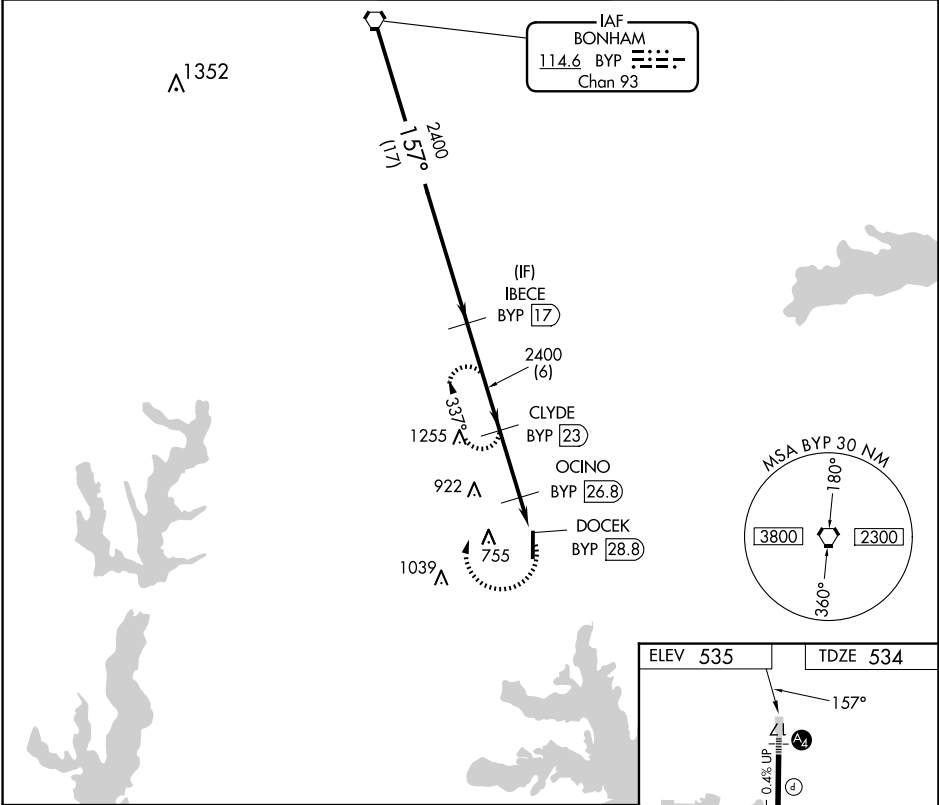


VORTAC BYP	APP CRS	Rwy Idg	8030
114.6	157°	TDZE	534
Chan 93		Apt Elev	535

VOR/DME RWY 17
MAJORS (GVT)

<div><div>▼</div><div>▲</div></div> <div>When local altimeter setting not received, use Terrell altimeter setting and increase all MDA 80 feet, increase Circling Cats C/D/E visibility by ¼ SM.</div>	<div>MALS</div> <div><div>4</div><div>—</div><div>—</div><div>—</div></div>	MISSED APPROACH: Climbing right turn to 2400 via BYP R-157 to CLYDE /23 DME and hold.
--	---	---

AWOS-3 133.425	FORT WORTH CENTER 132.025 360.75	MAJORS TOWER ★ 118.65 (CTAF) 0 385.425	GND CON 121.7 335.8	UNICOM 122.95
-------------------	-------------------------------------	---	------------------------	------------------



VGSIs and descent angles not coincident (VGSIs Angle 3.00/TCH 74).					
Procedure Turn NA	BYP VORTAC	IBECE BYP 17	CLYDE BYP 23	OCINO BYP 26.8	DOCEK BYP 28.8
	2400	2400	2400	1240	3.16° TCH 50
*1300 when using Terrell Muni altimeter setting.	17 NM	6 NM	3.8 NM	2 NM	
CATEGORY	A	B	C	D	E
S-17	1120-1 586 (600-1)	1120-1¼ 586 (600-1¼)	1120-1½ 586 (600-1½)	1120-2 586 (600-2)	
CIRCLING	1120-1 585 (600-1)	1120-1¼ 585 (600-1¼)	1120-1½ 585 (600-1½)	1240-2¼ 705 (800-2¼)	1300-2¾ 765 (800-2¾)

