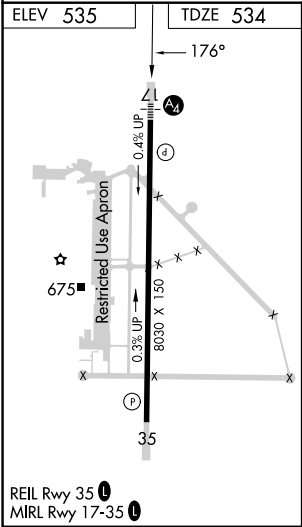
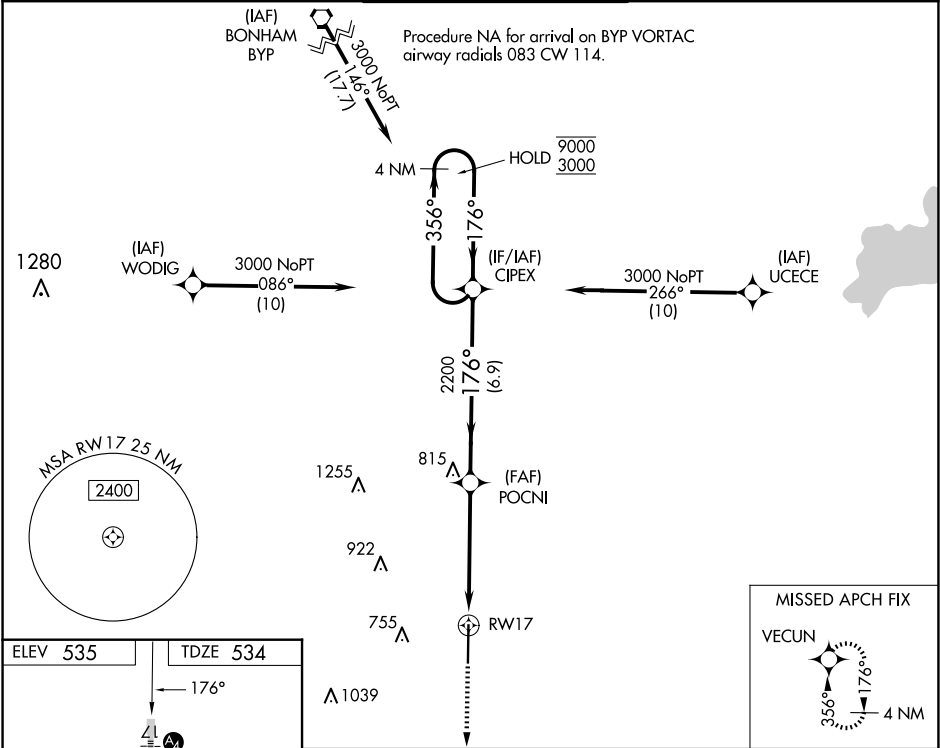


WAAS CH <b>86205</b> <b>W17A</b>	APP CRS <b>176°</b>	Rwy Idg <b>8030</b> TDZE <b>534</b> Apt Elev <b>535</b>
--	------------------------	---

RNAV (GPS) RWY 17  
MAJORS (GVT)

RNP APCH - GPS.		MALS	MISSED APPROACH: Climb to 3000 direct VECUN and hold.
<div><div></div><div></div></div> Inop table does not apply to LPV all Cats and LNAV Cats A and B. For uncompensated Baro-VNAV systems, LNAV/VNAV NA below -5°C or above 54°C. For inop ALS, increase LNAV/VNAV all Cats visibility to 1½ SM and LNAV Cat E visibility to 1½ SM.		<div><div></div><div></div></div>	

AWOS-3 <b>133.425</b>	FORT WORTH CENTER <b>132.025 360.75</b>	MAJORS TOWER ★ <b>118.65 (CTAF) 0 385.425</b>	GND CON <b>121.7 335.8</b>	UNICOM <b>122.95</b>
--------------------------	--	--	-------------------------------	-------------------------



3000 VECUN		VGSI and RNAV glidepath not coincident (VGSI Angle 3.00/TCH 74).		CIPEX 4 NM Holding Pattern	
1.5 NM to RWY 17		POCNI 2200		356° → 9000 ← 176° 3000	
RWY 17		2200		GP 3.00° TCH 57	
1.5 NM		3.6 NM		6.9 NM	
CATEGORY	A	B	C	D	E
LPV DA	734-1		200 (200-1)		
LNAV/VNAV DA	943-1		409 (500-1)		
LNAV MDA	1060-1	526 (600-1)	1060-1¼	526 (600-1¼)	
CIRCLING	1060-1	1080-1	1080-1½	1240-2¼	1300-2¾
	525 (600-1)	545 (600-1)	545 (600-1¼)	705 (800-2¼)	765 (800-2¾)

SC-2, 10 JUL 2025 to 07 AUG 2025

SC-2, 10 JUL 2025 to 07 AUG 2025