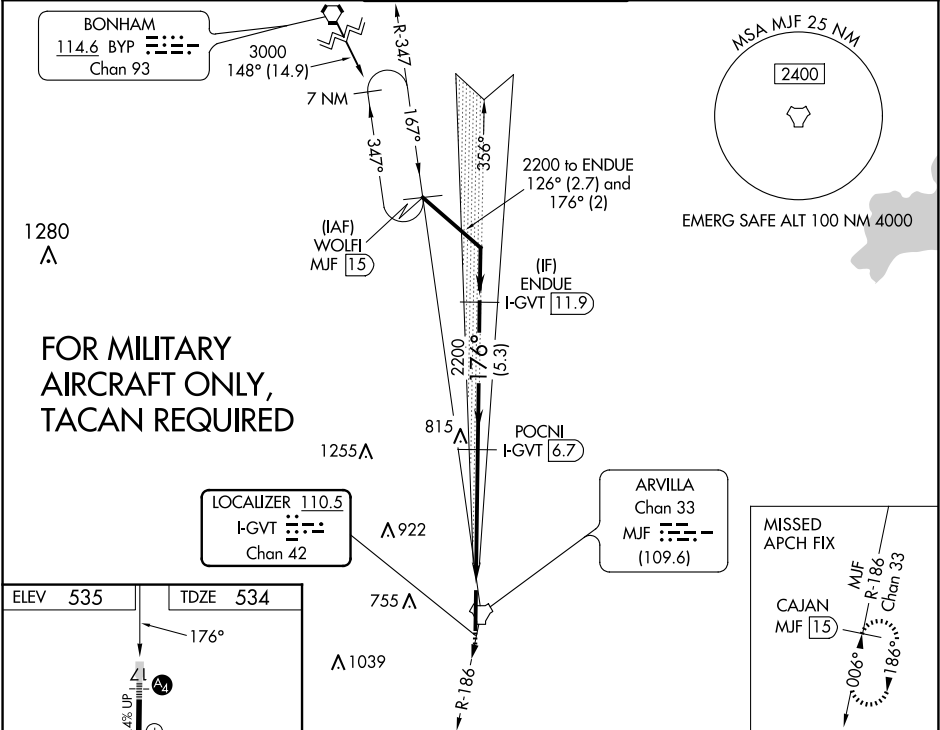


LOC/DME I-GVT 110.5 Chan 42	APP CRS 176°	Rwy Idg TDZE Apt Elev	8030 534 535
---	------------------------	-----------------------------	---

ILS Y or LOC Y RWY 17
MAJORS (GVT)

DME required.			MALSA	MISSED APPROACH: Climbing right turn to 3000 on MUF TACAN R-186 to CAJAN/MUF TACAN 15 DME and hold.
<div><div></div><div>Inop table does not apply to S-ILS 17 all Cats and S-LOC 17 Cats A/B. For inop ALS, increase S-LOC 17 Cat E visibility to 1½ SM. Autopilot coupled approach NA below 900 feet.</div></div>				
AWOS-3 133.425	FORT WORTH CENTER 132.025 360.75	MAJORS TOWER ★ 118.65 (CTAF) 0 385.425	GND CON 121.7 335.8	UNICOM 122.95



ELEV 535	TDZE 534	3000 MUF R-186 CAJAN MUF 15				
176°		VGSi and ILS glidepath not coincident (VGSi Angle 3.00/TCH 74).				
Restricted Use Apron		POCNI I-GVT 6.7				
675		ENDUE I-GVT 11.9				
0.3% UP		2200				
0.4% UP		2200				
8030 X 150		Use I-GVT DME when on localizer course.				
35		GS 3.00° TCH 57				
REIL Rwy 35		CATEGORY A B C D E				
MIRL Rwy 17-35		S-ILS 17 734-1 200 (200-1)				
		S-LOC 17 1060-1 526 (600-1) 1060-1¼ 526 (600-1¼)				
		CIRCLING 1060-1 525 (600-1) 1060-1½ 1240-2¼ 1300-2¾				

SC-2, 10 JUL 2025 to 07 AUG 2025

SC-2, 10 JUL 2025 to 07 AUG 2025