

APP CRS
243°

Rwy Idg
TDZE
95

2868
Apt Elev
96

RNAV (GPS) RWY 24
FULLERTON MUNI (FUL)

RNP APCH.

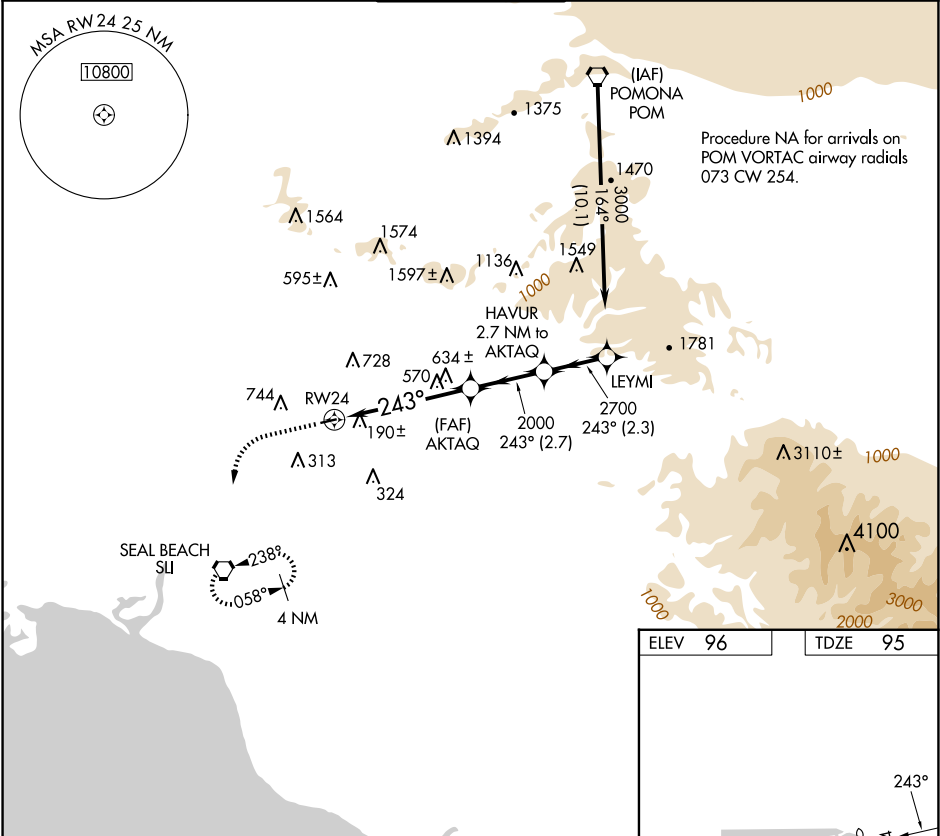
▼

NA

Inoperative table does not apply.
Helicopter visibility reduction below 1 SM NA.

MISSED APPROACH: Climb to 1300, then climbing left turn to 2600 direct SUI VORTAC and hold.

| | | | | |
|----------------|---------------------------------|-------------------------------------|------------------|------------------|
| ATIS 125.05 | SOCAL APP CON 125.35 316.125 | FULLERTON TOWER ★ 119.1 (CTAF) 0 | GND CON 121.8 | UNICOM 122.95 |
|----------------|---------------------------------|-------------------------------------|------------------|------------------|



1300

2600

SUI

VGSI and descent angles not coincident
(VGSI Angle 4.00/TCH 33).

RW24

AKTAQ

HAVUR
2.7 NM to
AKTAQ

LEYMI

3000

2700

2000

243°

3.51°

TCH 40

5 NM

2.7 NM

2.3 NM

Procedure
Turn
NA

| | | | | |
|----------|----------------------|------------------------|----|---|
| CATEGORY | A | B | C | D |
| LNAV MDA | 900-1 805 (900-1) | 900-1¼ 805 (900-1¼) | NA | |

ELEV 96

TDZE 95

3121 X 75

0.3% UP

243°

24

TWR 158

MIRL Rwy 6-24
REIL Rwy 6 and 24