

WAAS CH <b>93711</b> <b>W36A</b>	APP CRS <b>002°</b>	Rwy Ldg <b>6161</b> TDZE <b>1351</b> Apt Elev <b>1365</b>
--	------------------------	---

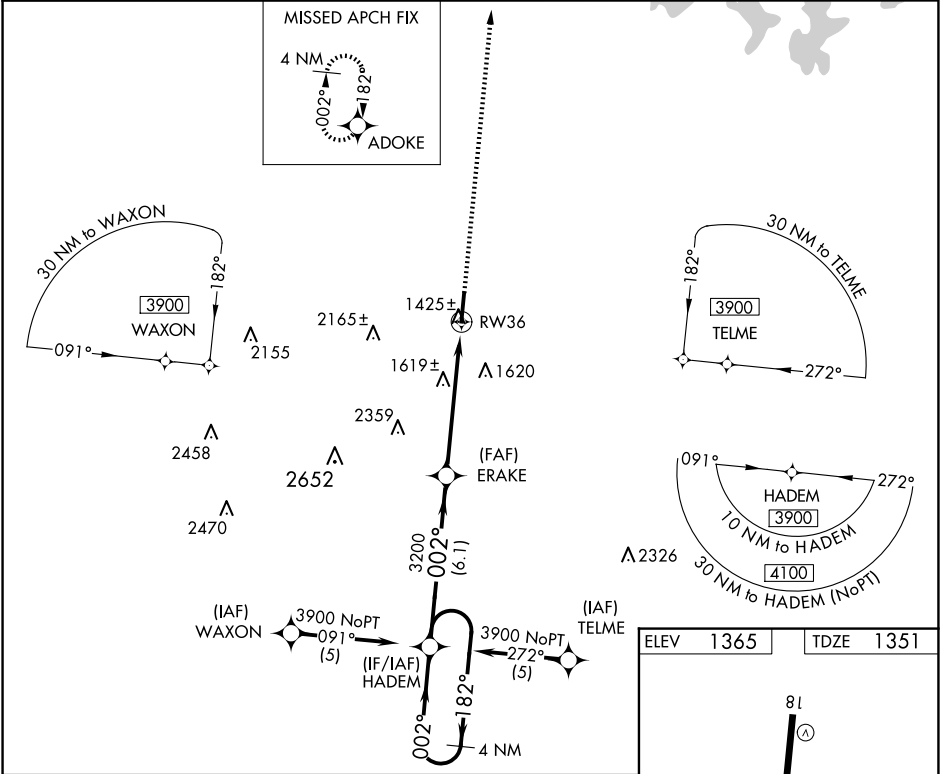
RNAV (GPS) RWY 36  
BOONE COUNTY (HRO)

▼ For uncompensated Baro-VNAV systems, LNAV/VNAV NA below -17°C (2°F) or above 46°C (114°F). DME/DME RNP-0.3 NA. VDP and Baro-VNAV NA when using Mountain Home altimeter setting. When local altimeter setting not received, use Mountain Home altimeter setting and increase all DA 139 feet and all MDA 140 feet, increase LPV all Cats and LNAV and Circling Cat C and D visibility ¼ mile, increase LNAV/VNAV all Cats visibility ½ mile. For inoperative MALSR when using Mountain Home altimeter setting, increase LPV all Cats visibility to 1¼.

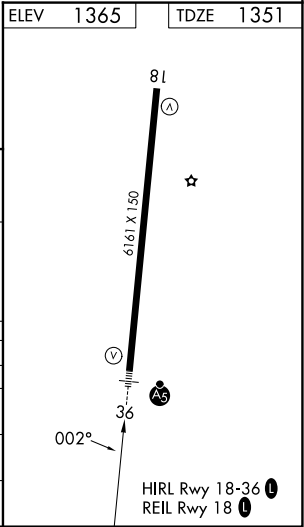
MALSR

MISSED APPROACH: Climb to 3200 direct ADOKE and hold.

ASOS <b>121.125</b>	MEMPHIS CENTER <b>126.85 281.55</b>	UNICOM <b>123.0 (CTAF) 0</b>
------------------------	--	---------------------------------



4 NM Holding Pattern		HADEM	ERAKE	3200	ADOKE
3900 ←182°		002° →	002°	*1.5 NM to RW36	*LNAV only.
GP 3.00°			3200		
TCH 52					
		6.1 NM	4.1 NM	1.5 NM	
CATEGORY	A	B	C	D	
LPV DA	1601-1½ 250 (300-1½)				
LNAV/VNAV DA	1815-1 464 (500-1)				
LNAV MDA	1880-1½ 529 (600-1½)		1880-1 529 (600-1)	1880-1¼ 529 (600-1¼)	
CIRCLING	1880-1 515 (600-1)		2340-3 975 (1000-3)	2560-3 1195 (1200-3)	



SC-1, 10 JUL 2025 to 07 AUG 2025

SC-1, 10 JUL 2025 to 07 AUG 2025