

WAAS CH 82506 W29A	APP CRS 293°	Rwy Ldg TDZE Apt Elev 660 660
--	------------------------	---

RNAV (GPS) RWY 29
CHESTER COUNTY G O CARLSON (MQS)

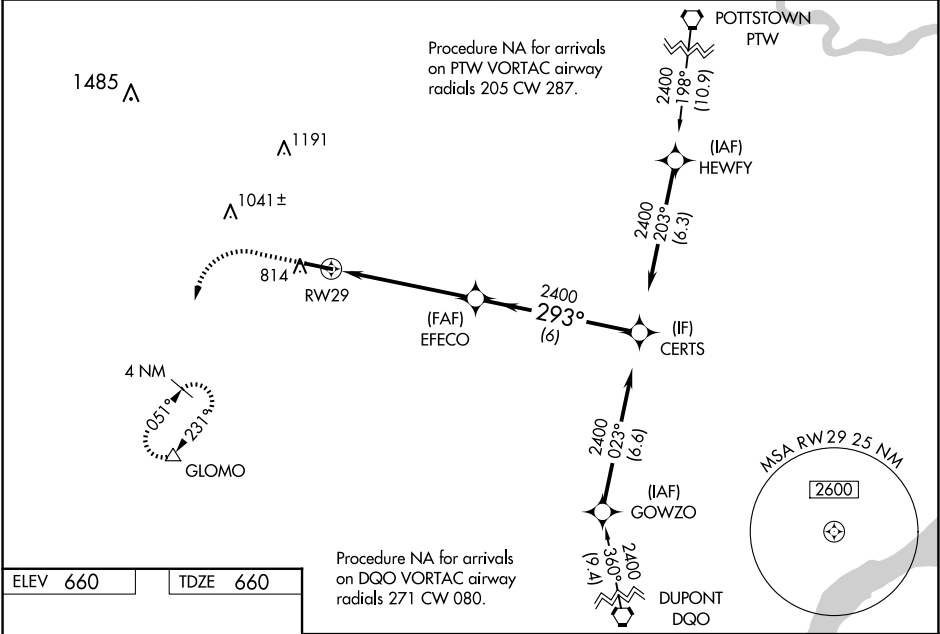
RNP APCH - GPS.

⚠

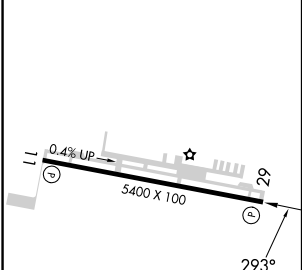
For uncompensated Baro-VNAV systems,
LNAV/VNAV NA below -16°C or above 54°C.

MISSED APPROACH: Climb to 1300 then
climbing left turn to 3000 direct GLOMO
and hold, continue climb-in-hold to 3000.

AWOS-3 126.25	PHILADELPHIA APP CON 124.35 319.15	CLNC DEL 125.6	UNICOM 122.7 (CTAF) 0
-------------------------	--	--------------------------	---------------------------------



ELEV 660	TDZE 660
-----------------	-----------------



1300

3000

GLOMO

EFECO 2400

CERTS 2400

1 NM to RWY29

1 NM

4.3 NM

6 NM

GP 3.00°
TCH 55

CATEGORY	A	B	C	D
LPV DA		910-3/4	250 (300-3/4)	
LNAV/VNAV DA		915-3/4	255 (300-3/4)	
LNAV MDA		1020-1	360 (400-1)	
C CIRCLING	1140-1 480 (500-1)	1240-1 580 (600-1)	1260-1½ 600 (600-1½)	1420-2½ 760 (800-2½)

NE-4, 10 JUL 2025 to 07 AUG 2025

NE-4, 10 JUL 2025 to 07 AUG 2025