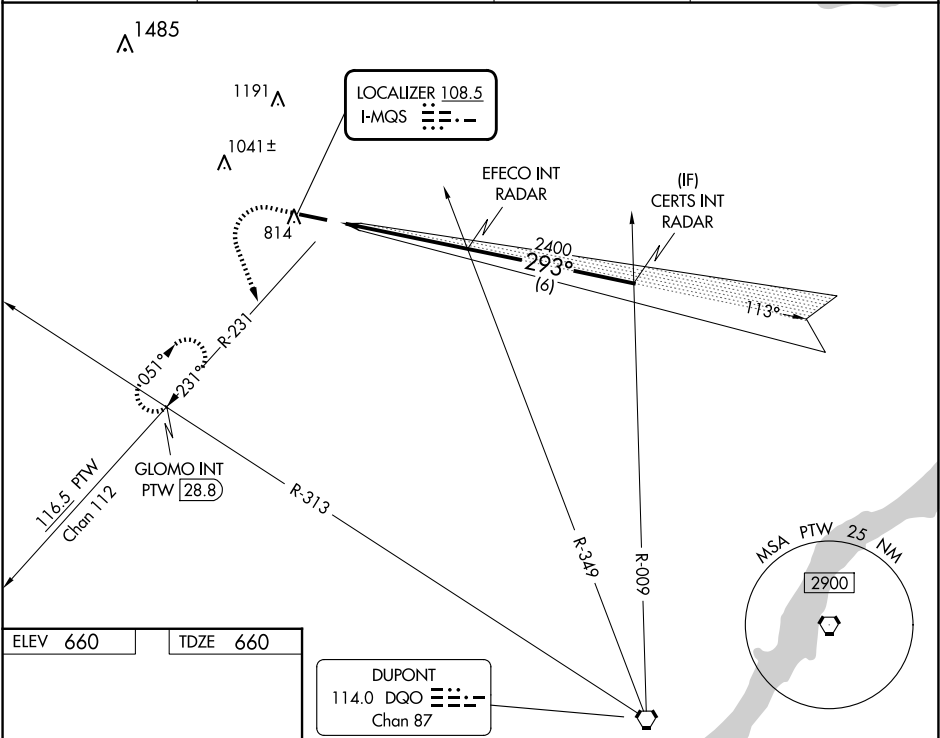


LOC I-MQS <b>108.5</b>	APP CRS <b>293°</b>	Rwy Ldg TDZE Apt Elev <b>5400</b> <b>660</b> <b>660</b>
---------------------------	------------------------	--

ILS or LOC RWY 29

CHESTER COUNTY G O CARLSON (MQS)

RADAR required for procedure entry.		MISSED APPROACH: Climb to 1300 then climbing left turn to 3000 on heading 170° and PTW R-231 to GLOMO INT/PTW 28.8 DME and hold, continue climb-in-hold to 3000.	
AWOS-3 <b>126.25</b>	PHILADELPHIA APP CON <b>124.35 319.15</b>	CLNC DEL <b>125.6</b>	UNICOM <b>122.7 (CTAF) 0</b>



ELEV 660	TDZE 660	DUPONT 114.0 DGO Chan 87			
1300 3000 hdg 170°		PTW R-231	GLOMO INT PTW 28.8	EFECO INT RADAR 2400	CERTS INT RADAR 2400
0.4% UP 5400 X 100 293°		5.3 NM 6 NM			
HIRL Rwy 11-29 REIL Rws 11 and 29		CATEGORY	A	B	C
FAF to MAP 5.3 NM		S-ILS 29	910-3/4 250 (300-3/4)		
		S-LOC 29	1040-1 380 (400-1)		
Knots 60 90 120 150 180 Min:Sec 5:18 3:32 2:39 2:07 1:46		CIRCLING	1140-1 480 (500-1)	1240-1 580 (600-1)	1260-1 1/2 600 (600-1 1/2)
					1420-2 1/2 760 (800-2 1/2)