

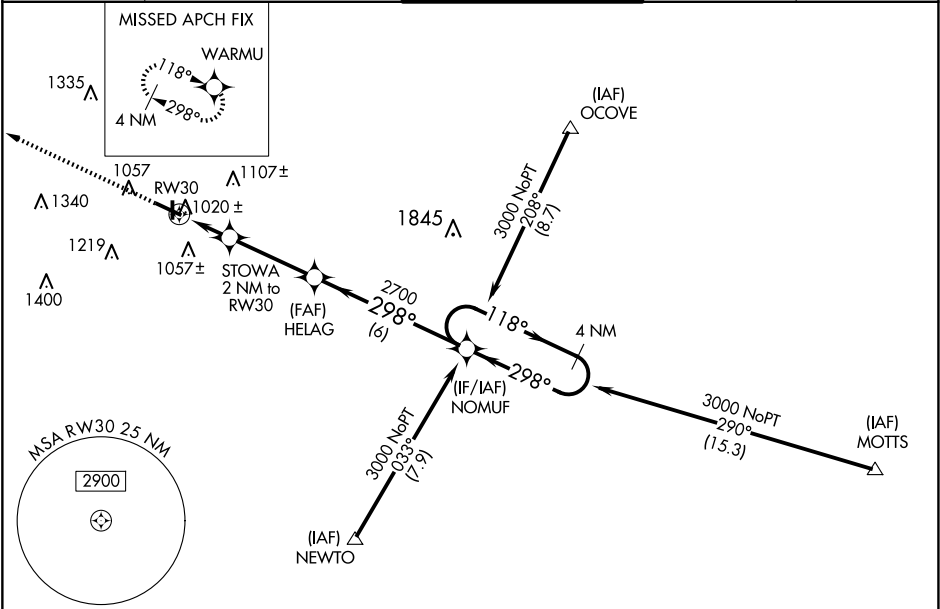
WAAS CH 56415 W30A	APP CRS 298°	Rwy Idg 5320 TDZE 919 Apt Elev 919
--	------------------------	---

RNAV (GPS) RWY 30

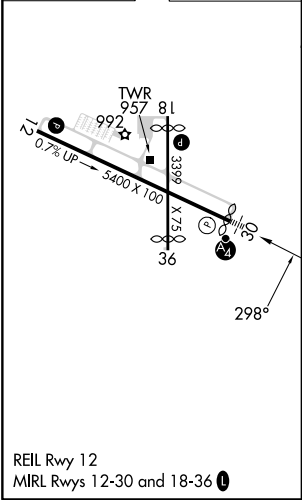
ANDERSON RGNL (AID)

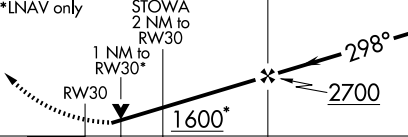
RNP APCH	For uncompensated Baro-VNAV systems, LNAV/VNAV NA below -16°C (4°F) or above 47°C (116°F). When local altimeter setting not received, use Muncie altimeter setting and increase all DA 32 feet and all MDA 40 feet, and increase LPV and LNAV/VNAV all Cals and LNAV Cat C visibility ¼ mile. Inoperative table does not apply. Rwy 30 helicopter visibility reduction below ¾ SM NA.	MALSF 	MISSED APPROACH: Climb to 3000 direct WARMU and hold.
----------	--	-----------	--

AWOS-3 128.55	INDIANAPOLIS APP CON 120.65 317.8	ANDERSON TOWER ★ 126.0 (CTAF) 0	GND CON 121.6	UNICOM 122.95
-------------------------	---	--	-------------------------	-------------------------



ELEV 919	TDZE 919
-----------------	-----------------



3000 ↑	WARMU ✱	4 NM Holding Pattern			
*LNAV only		STOWA 2 NM to RW30	HELAG	NOMUF	
					
1 NM		1 NM	3.4 NM	6 NM	
CATEGORY	A	B	C	D	
LPV DA	1234-1 315 (400-1)				
LNAV/ VNAV DA	1367-1½ 448 (500-1½)				
LNAV MDA	1300-1 381 (400-1)			1300-1¼ 381 (400-1¼)	
CIRCLING	1360-1 441 (500-1)	1400-1 481 (500-1)	1520-1¾ 601 (700-1¾)	1520-2 601 (700-2)	