

WAAS
CH **61343**
W12A

APP CRS
118°

Rwy Idg
TDZE
Apt Elev
5400
897
919

RNAV (GPS) RWY 12

ANDERSON RGNL (AID)

RNP APCH:

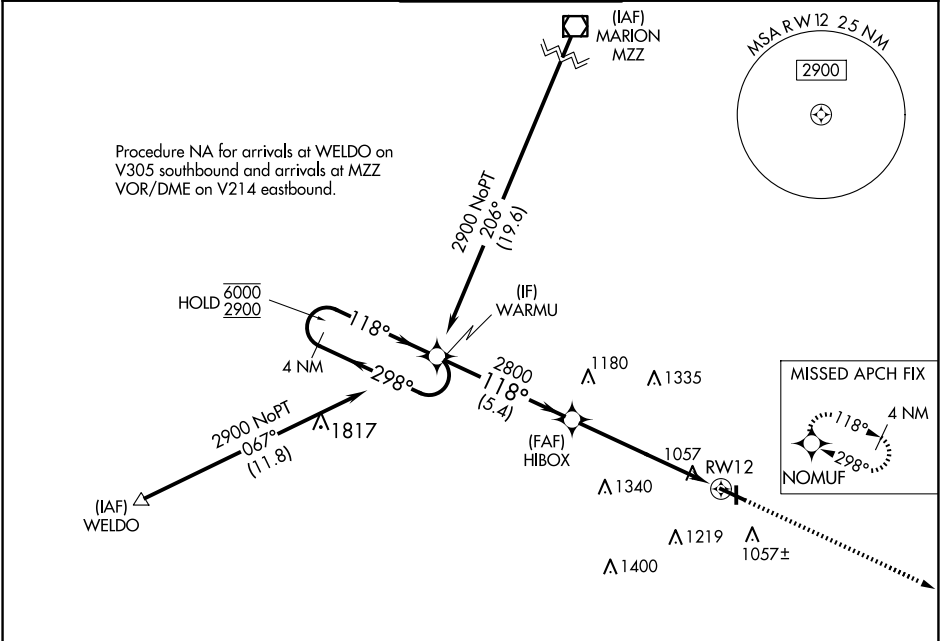
▼

▲

For uncompensated Baro-VNAV systems, procedure NA below -16°C or above 54°C.

MISSED APPROACH: Climb to 3000 direct NOMUF and hold.

AWOS-3 128.55	INDIANAPOLIS APP CON 120.65 317.8	ANDERSON TOWER ★ 126.0 (CTAF) 0	GND CON 121.6	UNICOM 122.95
-------------------------	---	---	-------------------------	-------------------------



4 NM
Holding Pattern

WARMU

6000
2900

←298°
118°→

GP 3.00°
TCH 45

2800

118°

2800

1.2 NM to RWY12

RWY12

5.4 NM

4.7 NM

1.2

3000

NOMUF

118°

TWR 957

81

992

0.7% UP

5400 X 100

3399

X 75.0

36

CATEGORY	A	B	C	D
LPV DA		1157-¾	260 (300-¾)	
LNAV/VNAV DA		1218-1	321 (300-1)	
LNAV MDA	1340-1	443 (500-1)	1340-1⅜	443 (500-1⅜)
CIRCLING	1360-1 441 (500-1)	1400-1 481 (500-1)	1520-1¾ 601 (700-1¾)	1520-2 601 (700-2)

MIRL Rwy 12-30 and 18-36
REIL Rwy 12