

LOC I-AID  
**110.1**

APP CRS  
**298°**

Rwy Idg  
TDZE  
Apt Elev  
**5320**  
**919**  
**919**

ILS or LOC RWY 30  
ANDERSON RGNL (AID)

ADF required.  
RADAR required for procedure entry.

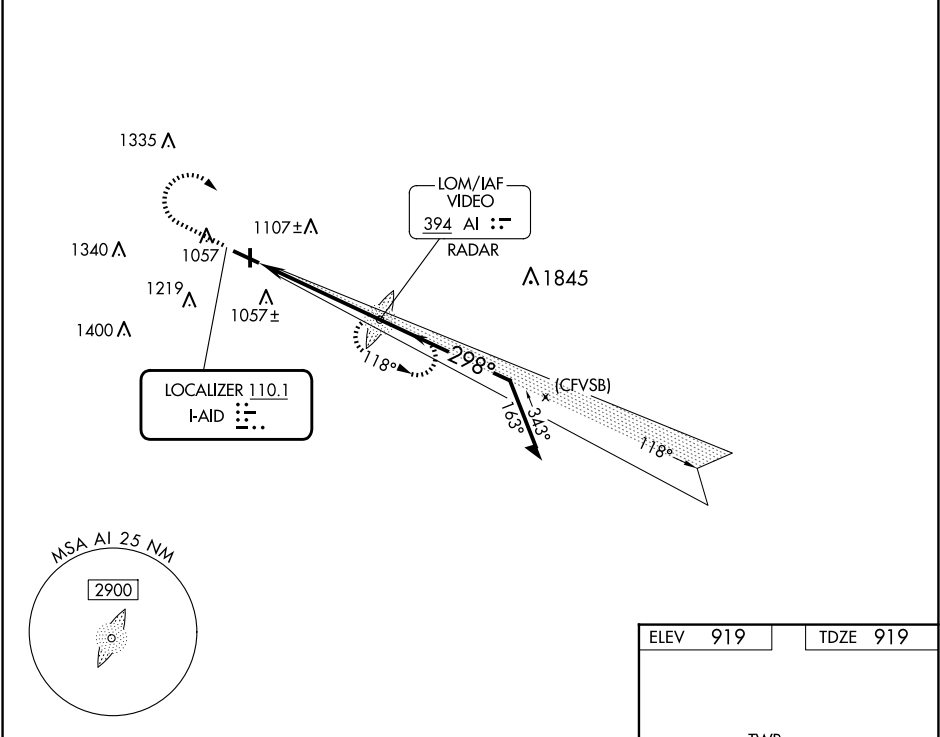
MALSF

MISSED APPROACH: Climb to 2200 then climbing right turn to 2900 direct VIDEO LOM/RADAR and hold.

▼ Rwy 30 helicopter visibility reduction below ¾ SM NA.

▲ For inop ALS, increase S-ILS 30 all Cats visibility to ½ SM.

AWOS-3 <b>128.55</b>	INDIANAPOLIS APP CON <b>120.65 317.8</b>	ANDERSON TOWER ★ <b>126.0</b> (CTAF) <b>0</b>	GND CON <b>121.6</b>	UNICOM <b>122.95</b>
-------------------------	---	--	-------------------------	-------------------------



2200	2900	AI RADAR	AI LOM/RADAR	Remain within 10 NM	2520	118°	2900	298°	2700	GS 3.00°	TCH 48
4.9 NM											
CATEGORY	A	B	C	D							
S-ILS 30	1209-¾ 290 (300-¾)										
S-LOC 30	1440-¾ 521 (600-¾)		1440-1¼ 521 (600-1¼)								
CIRCLING	1440-1 521 (600-1)		1520-1¾ 601 (700-1¾)		1520-2 601 (700-2)						

