

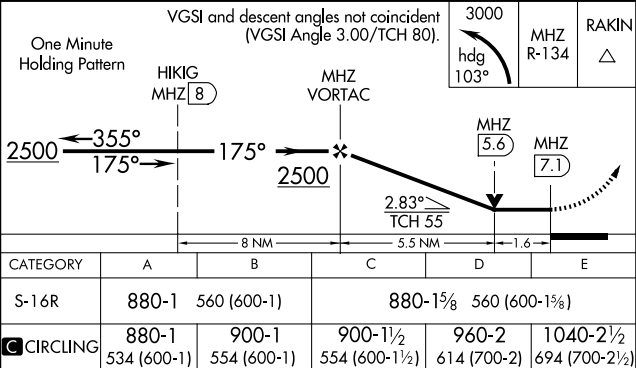
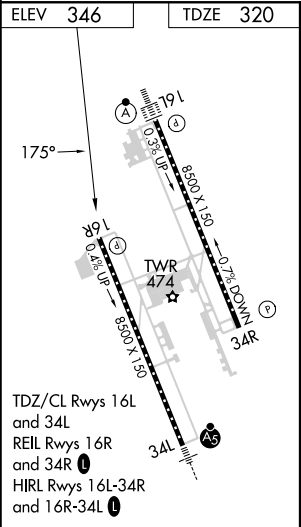
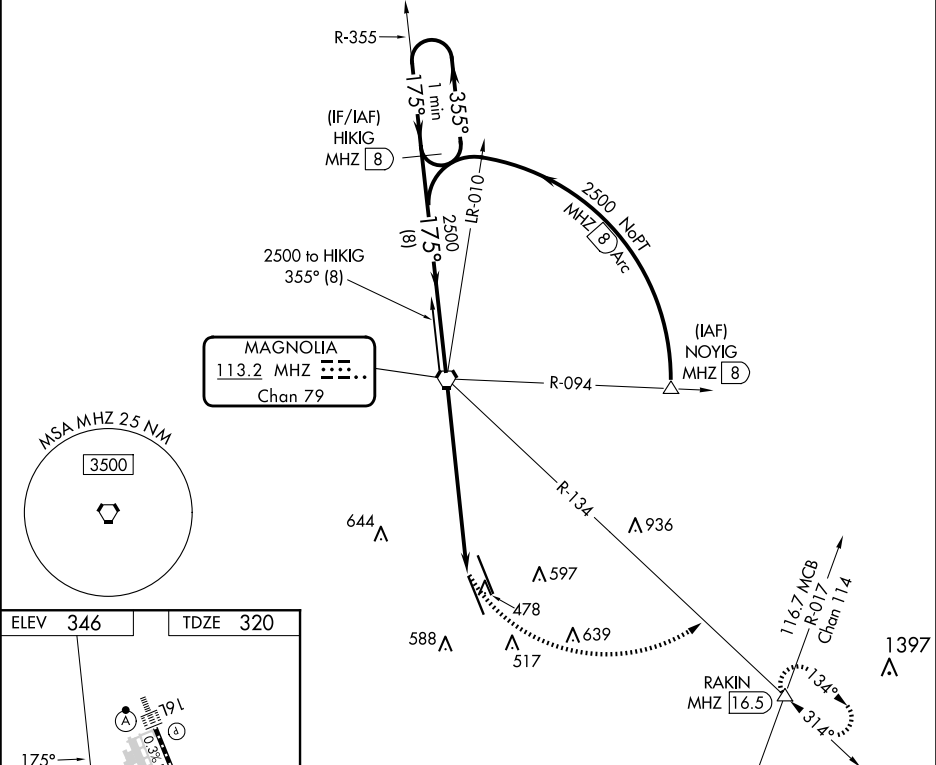
MHZ VORTAC 113.2 Chan 79	APP CRS 175°	Rwy Idg 8500 TDZE 320 Apt Elev 346
--	------------------------	---

VOR/DME or TACAN RWY 16R
JACKSON-MEDGAR WILEY EVERS INTL (JAN)

VDP NA with Hawkins Fld altimeter setting. When local altimeter setting not received, use Hawkins Fld altimeter setting and increase all MDA 20 feet; increase S-16R Cats C/D/E visibility 1/8 mile. Circling NA for Cat E SW of Rwy 16R-34L. Helicopter visibility reduction below 3/4 SM NA.

MISSED APPROACH: Climbing left turn to 3000 on heading 103° and MHZ VORTAC R-134 to RAKIN INT/ MHZ 16.5 DME and hold.

ATIS 121.05	JACKSON APP CON ★ 123.9 317.7	JACKSON TOWER ★ 120.9 (CTAF) 352.0	GND CON 121.7 348.6	UNICOM 122.95
-----------------------	---	--	-------------------------------	-------------------------



SC-4, 10 JUL 2025 to 07 AUG 2025

SC-4, 10 JUL 2025 to 07 AUG 2025