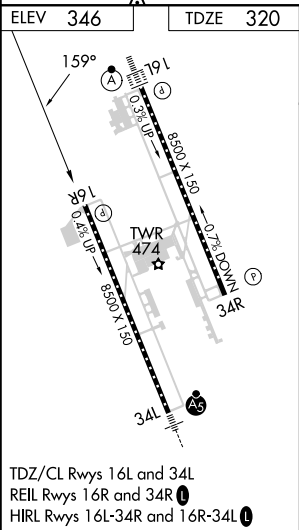
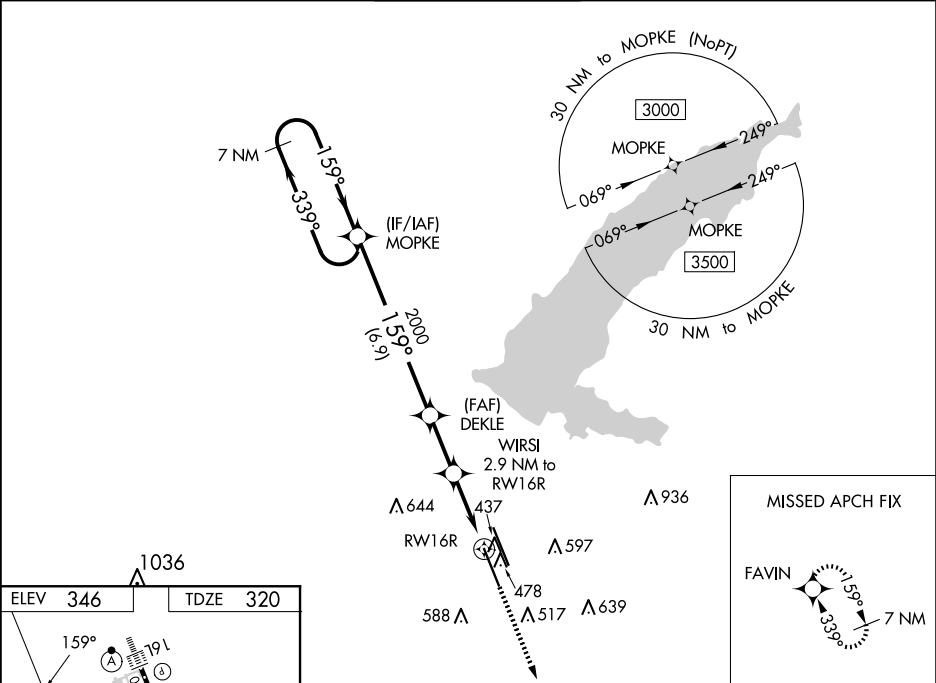


WAAS CH 49211 W16B	APP CRS 159°	Rwy Idg 8500 TDZE 320 Apt Elev 346
--	------------------------	---

RNAV (GPS) RWY 16R

JACKSON-MEDGAR WILEY EVERS INTL (JAN)

RNP APCH.				MISSED APPROACH: Climb to 3000 direct FAVIN and hold.	
<div><div><div>▼</div><div>▲</div><div>ASR</div></div><div>For uncompensated Baro-VNAV systems, LNAV/VNAV NA below -7°C or above 54°C. Circling NA for Cat E southwest of Rwy 16R-34L. When local altimeter setting not received, use Hawkins Fld altimeter setting and increase all DA 19 feet and all MDA 20 feet, increase LNAV/VNAV all Cats and LNAV Cat C/D/E visibility ¼ SM. Rwy 16R helicopter visibility reduction below ¾ SM NA. VDP and Baro-VNAV NA when using Hawkins Fld altimeter setting.</div></div>					
ATIS 121.05	JACKSON APP CON ★ 123.9 317.7	JACKSON TOWER ★ 120.9 (CTAF) 0 352.0	GND CON 121.7 348.6	UNICOM 122.95	



7 NM Holding Pattern MOPKE		VGSi and RNAV glidepath not coincident (VGSi Angle 3.00/TCH 80).		3000	FAVIN
3000 ← 339°		159° →		2000	WIRSI 2.9 NM to RWY 16R
GP 3.00° TCH 55		*1280		*1.1 NM to RWY 16R	*LNAV only.
6.9 NM		2.3 NM		1.8 NM	1.1 NM
CATEGORY	A	B	C	D	E
LPV DA	621-1 301 (300-1)				
LNAV/VNAV DA	638-1 318 (300-1)				
LNAV MDA	720-1	400 (400-1)	720-1½	400 (400-1½)	
CIRCLING	880-1 534 (600-1)	900-1 554 (600-1)	900-1½ 554 (600-1½)	960-2 614 (700-2)	1040-2½ 694 (700-2½)