

WAAS CH 72911 W16A	APP CRS 159°	Rwy Idg 8500 TDZE 312 Apt Elev 346
--	------------------------	---

RNAV (GPS) RWY 16L

JACKSON-MEDGAR WILEY EVERS INTL (JAN)

RNP APCH.

▼

▲

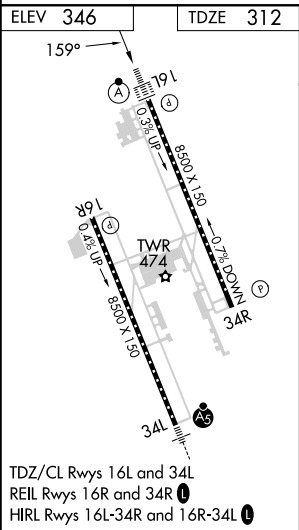
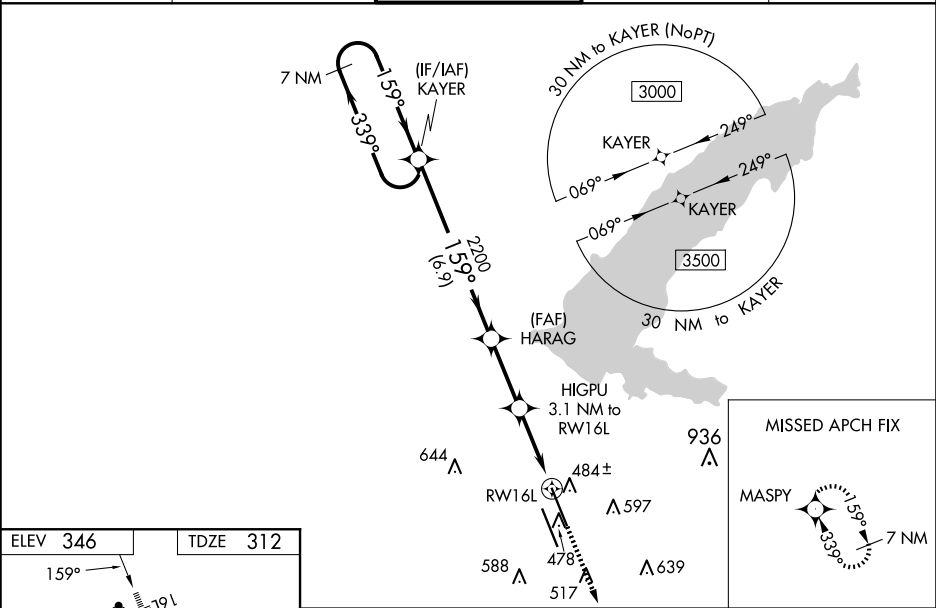
ASR

For uncompensated Baro-VNAV systems, LNAV/VNAV NA below -7°C or above 54°C.
Circling NA for Cat E southwest of Rwy 16R-34L. When local altimeter setting not received, use Hawkins Fld altimeter setting and increase all DA 19 feet and all MDA 20 feet, increase LNAV/VNAV all Cats visibility to RVR 3400 and LNAV Cats C/D/E visibility to RVR 5000. VDP and Baro-VNAV NA when using Hawkins Fld altimeter setting. For inop ALS, increase LPV Cat E visibility to RVR 4000, LNAV/VNAV Cat E visibility to RVR 5500, and LNAV Cat E visibility to 1½ SM. For inop ALS when using Hawkins Fld altimeter setting, increase LPV Cat E visibility to RVR 4000, LNAV/VNAV Cat E visibility to RVR 6000, and LNAV Cat E visibility to 1¾ SM.

ALSF-2

MISSED APPROACH:
Climb to 3000 direct
MASPY and hold.

ATIS 121.05	JACKSON APP CON ★ 123.9 317.7	JACKSON TOWER ★ 120.9 (CTAF) 0 352.0	GND CON 121.7 348.6	UNICOM 122.95
-----------------------	---	--	-------------------------------	-------------------------



7 NM Holding Pattern		VGSI and RNAV glidepath not coincident (VGSI Angle 3.00/TCH 71).		3000	MASPY
KAYER		HARAG		HIGPU	
3000		2200		3.1 NM to RWY 16L	
GP 3.00° TCH 55		1340		1.2 NM to RWY 16L	
		6.9 NM		2.7 NM	1.9 NM
CATEGORY	A	B	C	D	E
LPV DA	512/18 200 (200-½)				
LNAV/VNAV DA	652/31 340 (400-¾)				
LNAV MDA	760/24 448 (500-½)		760/45 448 (500-¾)		
CIRCLING	880-1 534 (600-1)	900-1 554 (600-1)	900-1½ 554 (600-1½)	960-2 614 (700-2)	1040-2½ 694 (700-2½)