

LOC I-JAN <u>110.5</u>	APP CRS 159°	Rwy Ldg 8500 TDZE 312 Apt Elev 346
----------------------------------	------------------------	---

ILS or LOC RWY 16L

JACKSON-MEDGAR WILEY EVERS INTL (JAN)

DME or RADAR required for Cat E.

T
A Circling NA for Cat E southwest of Rwy 16R-34L. When local altimeter setting not received, use HKS altimeter setting and increase S-ILS 16L DA to 531 feet; increase all MDAs 20 feet and S-LOC 16L visibility Cat C/D/E to RVR 3500.

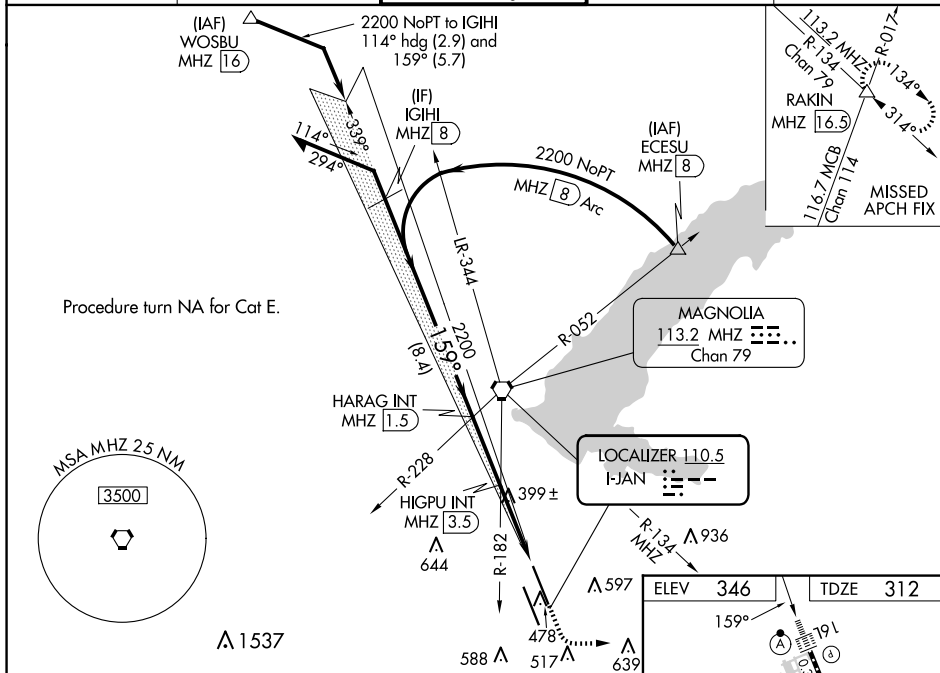
ASR For inop ALS, increase S-ILS 16L Cat E visibility to RVR 4000 and increase S-LOC 16L Cats C/D/E visibility to RVR 5500. For inop ALS when using HKS Field altimeter setting, increase S-ILS 16L Cat E visibility to RVR 4000 and increase S-LOC 16L Cats C/D/E visibility to RVR 5500.

ALSF-2



MISSED APPROACH: Climb to 800 then climbing left turn to 3000 on heading 090° and on MHZ VORTAC R-134 to RAKIN INT/16.5 DME and hold, continue climb-in-hold to 3000.

ATIS 121.05	JACKSON APP CON* 123.9 317.7	JACKSON TOWER* 120.9 (CTAF) 0 352.0	GND CON 121.7 348.6	UNICOM 122.95
----------------	---------------------------------	--	------------------------	------------------



SC-4, 10 JUL 2025 to 07 AUG 2025

VGSI and ILS glidepath not coincident (VGSI Angle 3.00/TCH 71).

Remain within 10 NM

HARAG INT MHZ 1.5
HIGPU INT MHZ 3.5

2200 339°
2200 159°
GS 3.00° TCH 55

2200 1340

2.7 NM 3.1 NM

CATEGORY	A	B	C	D	E
S-ILS 16L	512/18 200 (200-½)				
S-LOC 16L	660/24 348 (400-½)	660/30 348 (400-¾)			
C CIRCLING	880-1 534 (600-1)	900-1 554 (600-1)	900-1½ 554 (600-1½)	960-2 614 (700-2)	1040-2½ 694 (700-2½)

Knots 60 90 120 150 180
Min:Sec 5:48 3:52 2:54 2:19 1:56

TDZ/CL Rwys 16L and 34L
REIL Rwys 16R and 34R
HIRL Rwys 16L-34R and 16R-34L

FAF to MAP 5.8 NM