

LOC I-JAN	APP CRS	Rwy Ldg	<b>8500</b>
<b><u>110.5</u></b>	<b>159°</b>	TDZE	<b>312</b>
		Apt Elev	<b>346</b>

ILS RWY 16L (CAT II & III)  
JACKSON-MEDGAR WILEY EVERS INTL (JAN)



ASR

When control tower closed, procedure NA.  
When local altimeter setting not received, procedure NA.

ALSF-2



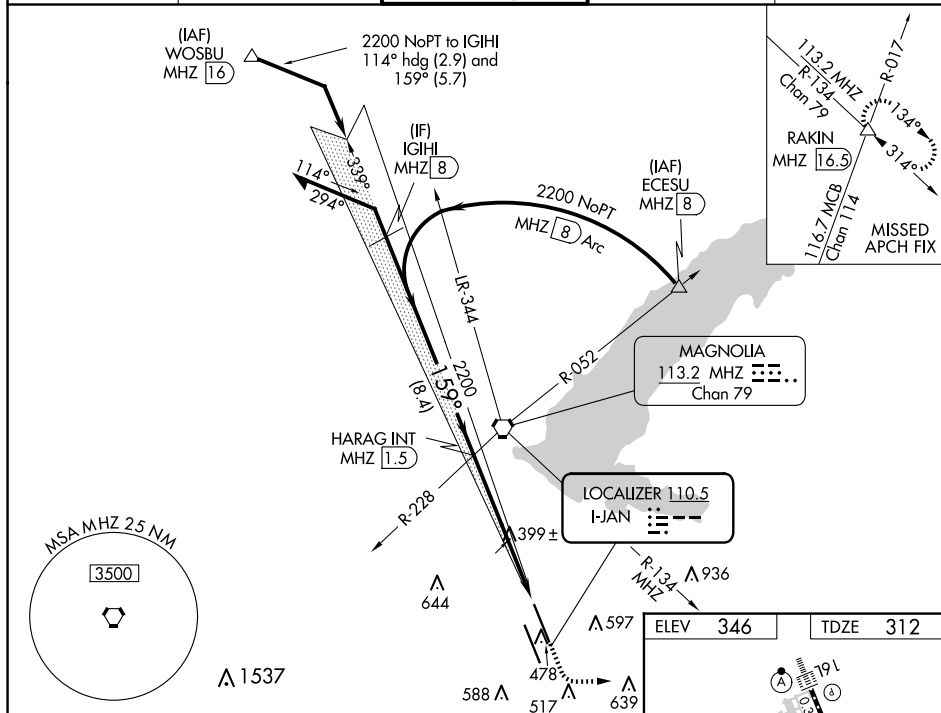
**MISSED APPROACH:** Climb to 800 then climbing left turn to 3000 on heading 090° and on MHz VORTAC R-134 to RAKIN INT/16.5 DME and hold, continue climb-in-hold to 3000.

ATIS  
**121.05**

JACKSON APP CON★  
123.9 317.7

JACKSON TOWER ★  
120.9 (CTAF)  352.0

GND CON  
**121.7 348.6**

UNICOM  
122.95

Remain  
within 10 NM

HARAG INT  
MHZ 1.5

800  
▲

300

↖

MHZ

RAKIN

2200  
GS 3.00°  
TCH 55

2200

VGSI and ILS glidepath not coincident  
(VGSI Angle 3.00/TCH 71).

CATEGORY  
S-ILS 16L

A

---

9


CAT II RA 119/12 100 DA 412

CAT III RVR 07

CATEGORY II & III ILS - SPECIAL AIRCREW  
& AIRCRAFT CERTIFICATION REQUIRED

TDZ/CL Rwy 16L  
and 34L  
REIL Rwy 16R  
and 34R **L**  
HIRL Rwy 16L-34R  
and 16R-34L **L**

ILS RWY 16L (CAT II &amp; III)