

WAAS CH 56301 W02A	APP CRS 022°	Rwy Idg TDZE 623 Apt Elev 623
--	------------------------	---

RNAV (GPS) RWY 2

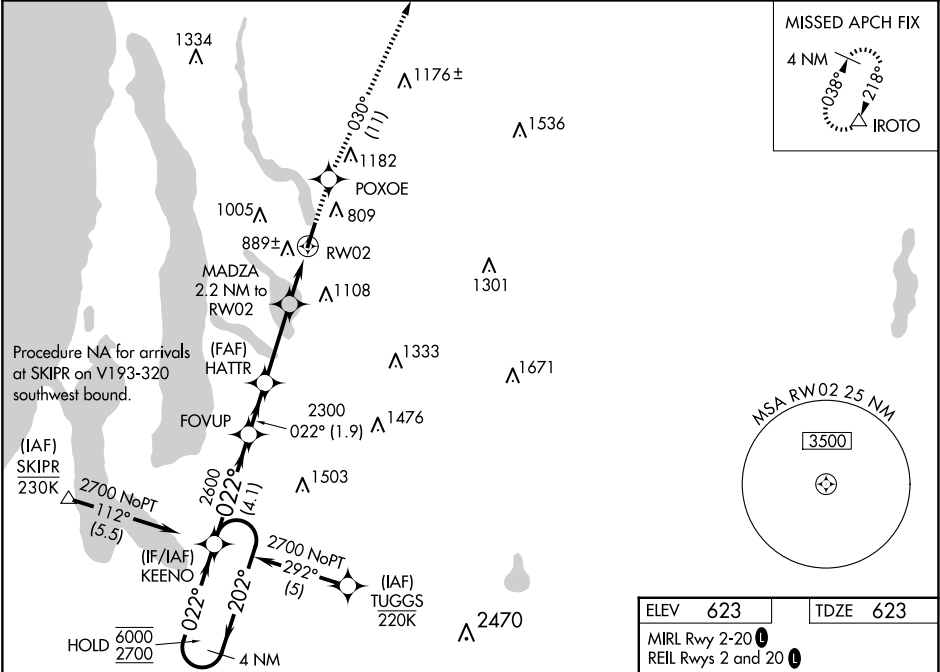
ANTRIM COUNTY (ACB)

RNP APCH-GPS.

▼ Rwy 2 helicopter visibility reduction below ¾ SM NA. For uncompensated Baro-VNAV systems, LNAV/VNAV NA below -16°C or above 54°C. Baro-VNAV and VDP NA when using TVC altimeter setting. When local altimeter setting not received, use TVC altimeter setting: increase LPV DA to 954 feet and all visibilities ¼ SM; increase LNAV/VNAV DA to 1187 feet and all visibilities ¼ SM; increase all MDAs 60 feet and LNAV visibility Cats C and D ¼ SM, and Circling visibility Cats B and C ¼ SM.

MISSED APPROACH:
Climb to 3000 direct
POXOE and on track
030° to IROTO and
hold.

AWOS-3P 119.275	MINNEAPOLIS CENTER 132.9 338.3	UNICOM 122.7 (CTAF) 0
---------------------------	--	---------------------------------



4 NM Holding Pattern		KEENO	FOVUP	HATTR	MADZA 2.2 NM to RW02	1.5 NM to RW02	POXOE	tr 030°	IROTO
6000 ← 202°		2700 → 022°	022°	2600	2300	1360			
GP 3.00° TCH 45									
		4.1 NM	1.9 NM	3 NM	0.7 NM	1.5			
CATEGORY	A	B	C	D					
LPV DA	902-1		279 (300-1)						
LNAV/VNAV DA	1135-1⅜		512 (600-1⅜)						
LNAV MDA	1140-1	517 (600-1)	1140-1⅜	517 (600-1⅜)					
CIRCLING	1360-1 737 (800-1)	1380-1 757 (800-1)	1560-2¾ 937 (1000-2¾)	1640-3 1017 (1100-3)					

