

WAAS
CH **69240**
W04A

APP CRS
038°

Rwy Ldg
TDZE
Apt Elev
9207
4150
4200

RNAV (GPS) RWY 4
ALAMOGORDO-WHITE SANDS RGNL (A.L.M)

RNP APCH.

▼

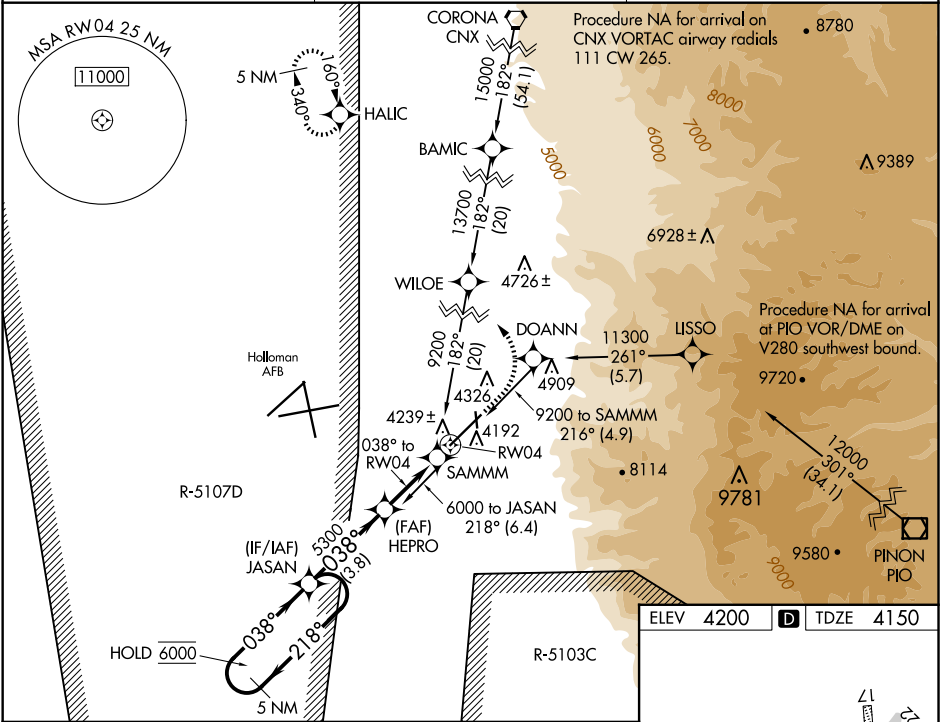
⚠

Circling NA to Rwy 17 and 35. Circling NA for Cats C and D southeast of Rwy 4-22.

For uncompensated Baro-VNAV systems, LNAV/VNAV NA below -23°C or above 54°C. Civil aircraft require ATC clearance prior to entering Restricted Area 5107D.

MISSED APPROACH: Climb to 4600 then climbing left turn to 6000 direct HALIC and hold.

AWOS-3 127.825	HOLLOMAN APP CON ★ 120.6 269.225	UNICOM 122.8 (CTAF) 0
--------------------------	--	---------------------------------



5 NM Holding Pattern

6000 ← 218°
038° →

GP 3.20°
TCH 55

HEPRO

5300

4600 6000 HALIC

*1 NM to RW04

*LNAV only

RW04

3.8 NM

2.3 NM

1 NM

CATEGORY	A	B	C	D
LPV DA		4400-1	250 (200-1)	
LNAV/VNAV DA		4420-1	270 (300-1)	
LNAV MDA		4500-1	350 (300-1)	
Ⓢ CIRCLING	4760-1 560 (600-1)	4880-1 680 (700-1)	4960-2¼ 760 (800-2¼)	4960-2½ 760 (800-2½)

ELEV 4200

TDZE 4150

0.8% UP

0.8% DOWN

0.6% UP

0.6% DOWN

3.57 X 1.90

3.57 X 1.90

4215

9207 X 1.50

35

038°

REIL Rwy 4 and 22
MIRL Rwy 4-22 0