

WAAS CH <b>70418</b> <b>W05A</b>	APP CRS <b>047°</b>	Rwy Idg TDZE <b>309</b> Apt Elev <b>333</b>
--	------------------------	---

RNAV (GPS) RWY 5

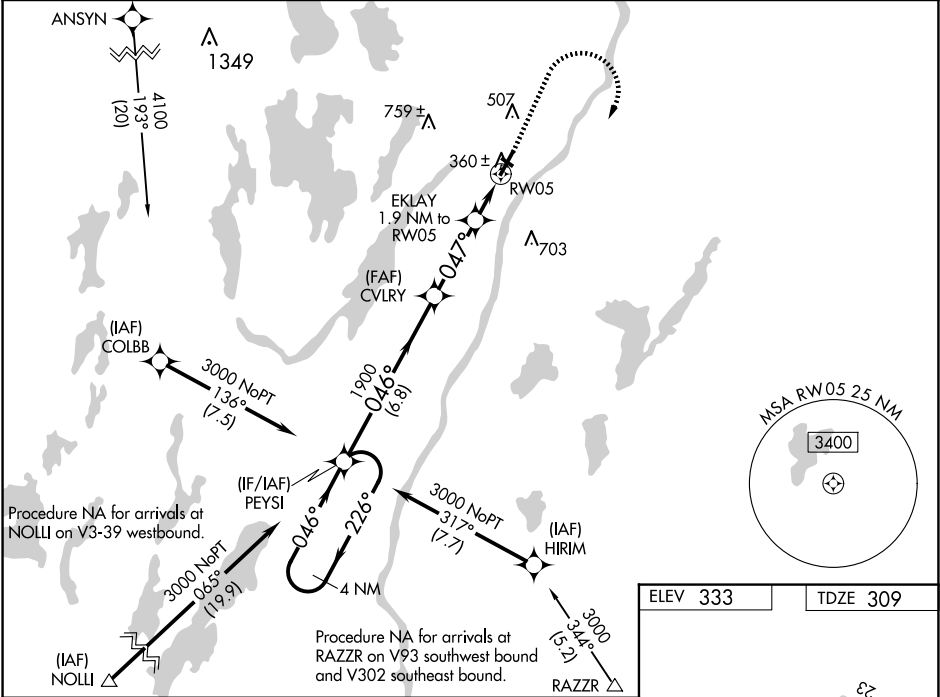
WATERVILLE RGNL (WVL)

⚠ Inop table does not apply to LPV. For uncompensated Baro-VNAV systems, LNAV/VNAV NA below -15°C (5°F) or above 54°C (130°F). DME/DME RNP-0.3 NA. Helicopter visibility reduction below ¾ SM NA. Baro-VNAV and VDP NA when using Augusta altimeter setting. When local altimeter setting not received, use Augusta altimeter setting; increase LPV DA to 544 feet, LNAV/VNAV DA to 623 feet and all visibilities ¾ SM; increase all MDAs 40 feet and Circling Cat C visibility ¼ SM. Night Landing: Rwy 14 NA. For inop MALSF, increase LNAV/VNAV Cat D visibility to 1 mile and LNAV Cats C/D visibility to ¾ mile. For inop MALSF, when using Augusta altimeter setting, increase LPV all Cats visibility to ¾ mile, LNAV/VNAV Cat D visibility to 1 ½ mile, and LNAV Cat D visibility to 1 mile.

MALSF

MISSED APPROACH:  
Climb to 1000 then  
climbing right turn to  
3000 direct PEYSI  
and hold.

AWOS-3PT <b>118.375</b>	PORTLAND APP CON ★ <b>128.35 299.2</b>	CLNC DEL <b>124.6 299.2</b>	UNICOM <b>122.7 (CTAF) 0</b>
----------------------------	---	--------------------------------	---------------------------------



4 NM Holding Pattern		PEYSI		CVLRY	EKLAY 1.9 NM to RW05	1000	3000	PEYSI
3000 ← 226° 046° →		046°		1900	*047°	*LNAV only.		
GP 3.00° TCH 48		1900		*920	*0.9 NM to RW05	RW05		
		6.8 NM		3.1 NM	1 NM	0.9 NM		
CATEGORY	A	B	C	D				
LPV DA	509-¾		200 (200-¾)					
LNAV/ VNAV DA	588-¾		279 (300-¾)					
LNAV MDA	620-¾		311 (300-¾)					
CIRCLING	860-1	527 (600-1)	1100-2¼ 767 (800-2¼)	1120-2½ 787 (800-2½)				

