

LOC/DME I-RLU 110.5 Chan 42	APP CRS 047°	Rwy Idg 5500 TDZE 309 Apt Elev 333
---	------------------------	---

ILS or LOC/DME RWY 5

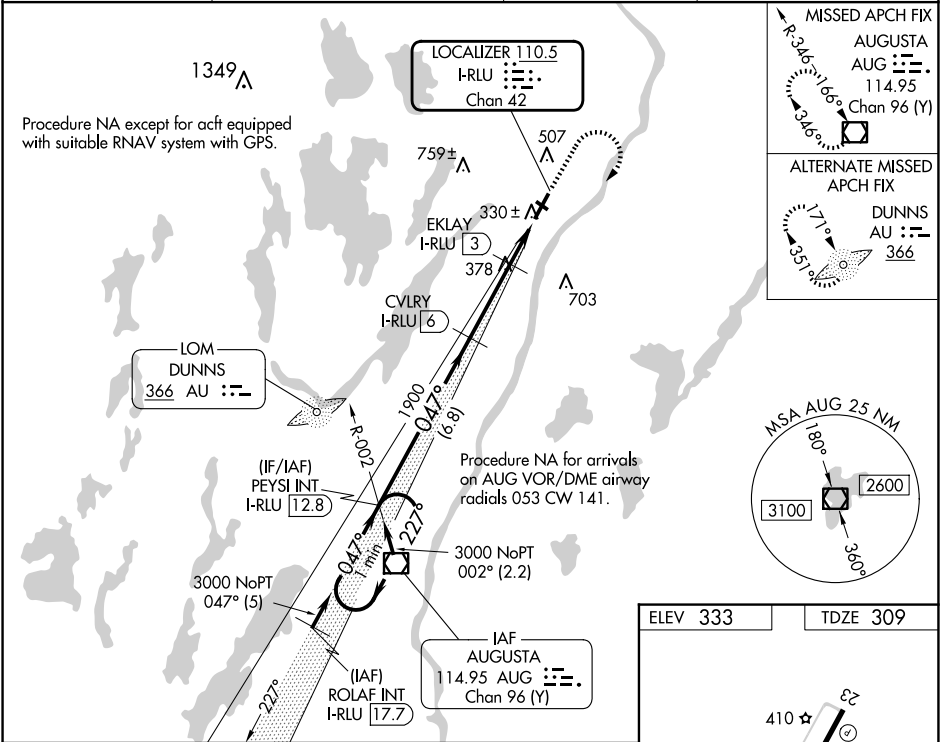
WATERVILLE RGNL (WVL)

⚠ Night landing: Rwy 14 NA. Helicopter visibility reduction below 3/4 SM NA. VDP NA when using Augusta altimeter setting. When local altimeter setting not received, use Augusta altimeter setting and increase S-ILS 5 DA to 544 feet; increase all MDAs 40 feet and increase S-LOC 5 Cats C/D and Circling Cat D visibility 1/4 SM. Inop table does not apply to S-ILS 5. For inop MALSF, increase S-LOC 5 Cat D visibility to 1 mile. For inop MALSF, when using Augusta altimeter setting, increase S-ILS 5 all Cats visibility to 1/2 mile and S-LOC 5 Cat C/D visibility to 1 1/8 mile. Autopilot coupled approach NA below 600.

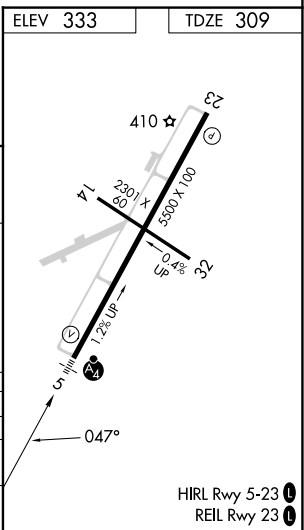
MALSF

MISSED APPROACH:
Climb to 1200 then
climbing right turn to
3000 direct AUG
VOR/DME and hold.

AWOS-3PT 118.375	PORTLAND APP CON ★ 128.35 299.2	CLNC DEL 124.6 299.2	UNICOM 122.7 (CTAF) 0
----------------------------	---	--------------------------------	---------------------------------



One Minute Holding Pattern				
GS 3.00° TCH 48				
CATEGORY	A	B	C	D
S-ILS 5	509-3/4 200 (200-3/4)			
S-LOC 5	680-3/4 371 (400-3/4)			
CIRCLING	860-1 527 (600-1)		1100-2 1/4 767 (800-2 1/4)	1120-2 1/2 787 (800-2 1/2)



NE-1, 10 JUL 2025 to 07 AUG 2025

NE-1, 10 JUL 2025 to 07 AUG 2025