

WAAS CH 63139 W11A	APP CRS 111°	Rwy Ldg TDZE Apt Elev 777
--	------------------------	--

RNAV (GPS) RWY 11

AUBURN UNIVERSITY RGNL (AUO)

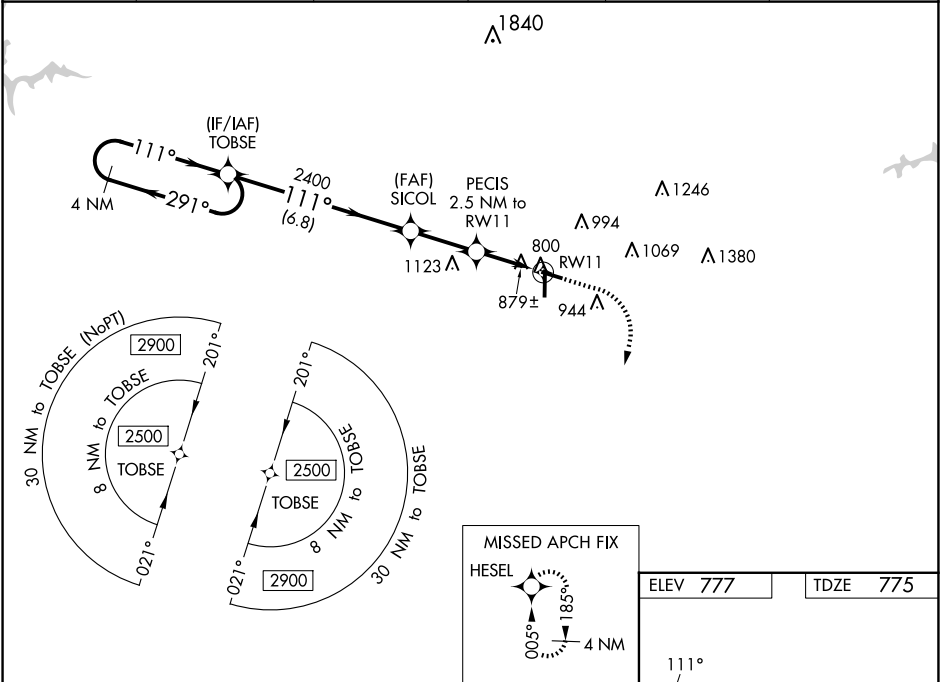
▼

▲

For uncompensated Baro-VNAV systems, LNAV/VNAV NA below -16°C (4°F) or above 54°C (130°F). Baro-VNAV and VDP NA when using Columbus altimeter setting. DME/DME RNP-0.3 NA. When local altimeter setting not received, use Columbus altimeter setting: increase LPV DA to 1138 feet and visibility all Cats ¼ SM; increase LNAV/VNAV DA to 1173 feet and visibility all Cats ⅓ SM; increase all MDA 120 feet and LNAV Cats C/D and Circling Cat C visibility ¼ SM and Circling Cat D visibility ½ SM.

MISSED APPROACH:
Climb to 1200 then climbing right turn to 3000 direct HESEL and hold.

AWOS-3PT 132.575	ATLANTA APP CON ★ 125.5 323.1	AUBURN TOWER ★ 123.875	GND CON 121.625	CLNC DEL 118.7 (When twr closed)	UNICOM 123.0 (CTAF) 0
----------------------------	---	----------------------------------	---------------------------	---	--



4 NM Holding Pattern TOBSE		SICOL		PECIS 2.5 NM to RW11		*1.1 NM to RW11		RW11	
2500 ← 291°		2400		2400		*1600		81	
GP 3.00° TCH 45		2400		2400		2400		4000 X 75	
6.8 NM		2.5 NM		1.4 NM		1.1 NM		5264 X 100	
A		B		C		D		0.9% UP	
LPV DA		1025-1		250 (300-1)				36	
LNAV/VNAV DA		1060-1		285 (300-1)					
LNAV MDA		1160-1		385 (400-1)		1160-1½		385 (400-1½)	
CIRCLING		1280-1		1360-1		1380-1¾		1480-2¼	
		503 (600-1)		583 (600-1)		603 (700-1¾)		703 (800-2¼)	

MIRL Rwy 11-29 0
HIRL Rwy 18-36 0