

LOC/DME I-AUO 110.1 Chan 38	APP CRS 005°	Rwy Ldg 5264 TDZE 759 Apt Elev 777
---	------------------------	---

ILS or LOC RWY 36
AUBURN UNIVERSITY RGNL (AUO)

DME required.



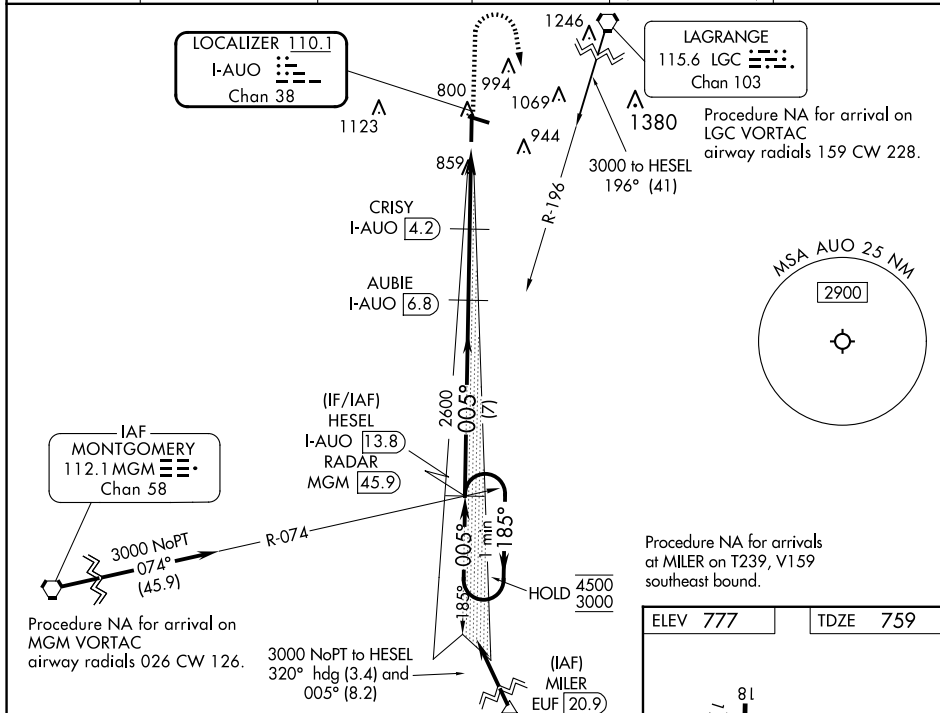
Inop table does not apply to S-ILS 36 all Cats.

MALSF



MISSED APPROACH: Climb to 1500 then climbing right turn to 3000 on heading 175° and on LGC VORTAC R-196 to HESEL/I-AUO 13.8 DME/RADAR and hold.

AWOS-3PT 132.575	ATLANTA APP CON ★ 125.5 323.1	AUBURN TOWER ★ 123.875	GND CON 121.625	CLNC DEL 118.7 (When twr closed)	UNICOM 123.0 (CTAF) 0
----------------------------	---	----------------------------------	---------------------------	---	--



One Minute Holding Pattern		HESEL I-AUO 13.8 RADAR		AUBIE I-AUO 6.8		<div style="display: flex; align-items: center;"> <div style="margin-right: 10px;"> 1500 ↑ </div> <div style="margin-right: 10px;"> 3000 hdg 175° </div> <div> LGC R-196 </div> </div>		HESEL I-AUO 13.8	
<div style="display: flex; align-items: center;"> <div style="margin-right: 10px;"> 4500 3000 </div> <div style="margin-right: 10px;"> ←185° →005° </div> <div> 005° </div> </div>		<div style="display: flex; align-items: center;"> <div style="margin-right: 10px;"> 2600 2600 </div> <div style="margin-right: 10px;"> 1780 </div> <div> CRISY I-AUO 4.2 </div> </div>		<div style="display: flex; align-items: center;"> <div style="margin-right: 10px;"> I-AUO 2.1 </div> <div> I-AUO 1 </div> </div>		<div style="display: flex; align-items: center;"> <div style="margin-right: 10px;"> GS 3.00° TCH 44 </div> <div> 005° </div> </div>		<div style="display: flex; align-items: center;"> <div style="margin-right: 10px;"> 7 NM </div> <div style="margin-right: 10px;"> 2.5 NM </div> <div style="margin-right: 10px;"> 2.1 NM </div> <div> 1.1 NM </div> </div>	
CATEGORY		A		B		C		D	
S-ILS 36				959- ³ / ₄		200 (200- ³ / ₄)			
S-LOC 36				1120- ³ / ₄		361 (400- ³ / ₄)			
C CIRCLING		1240-1 463 (500-1)		1360-1 583 (600-1)		1380-1 ³ / ₄ 603 (700-1 ³ / ₄)		1440-2 663 (700-2)	

