
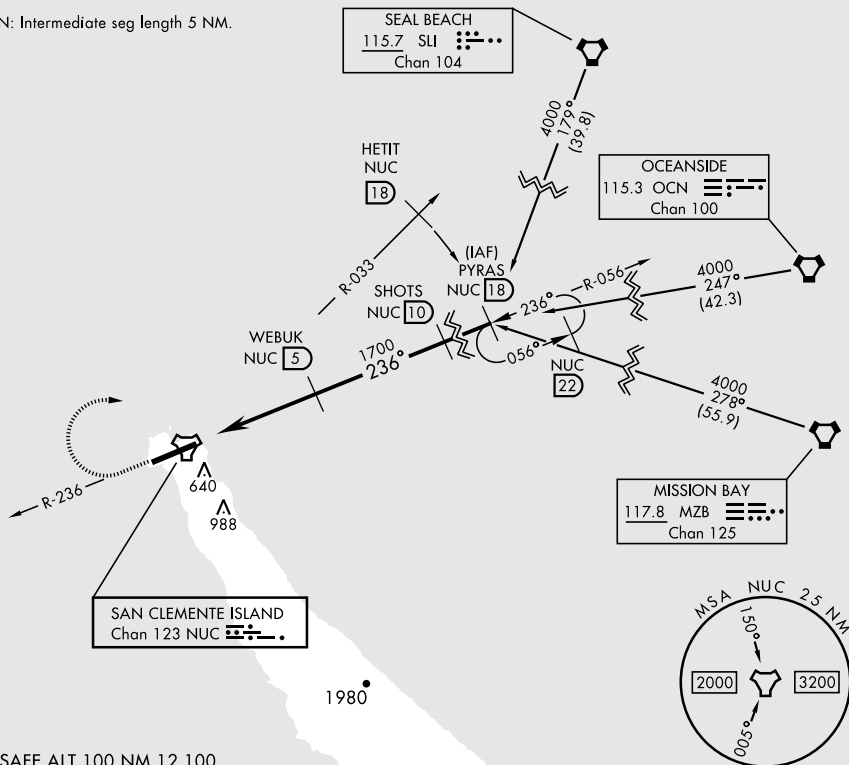
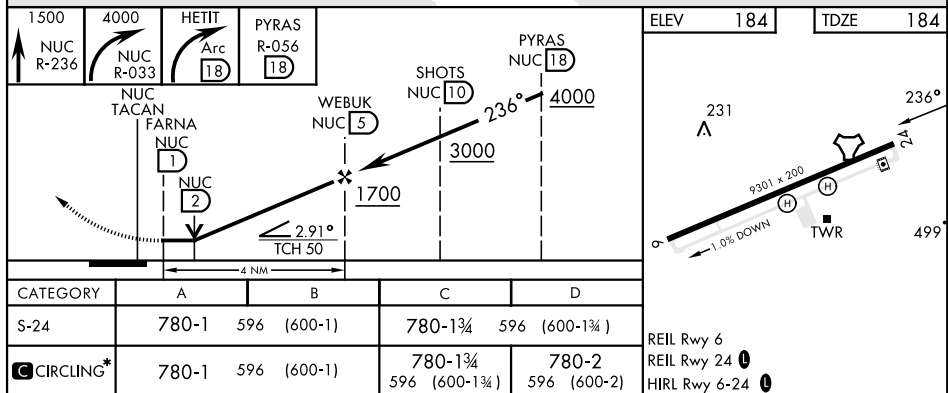


TACAN NUC Chan 123	APCH CRS 236°	Rwy Idg 9301 TDZE 184 Arpt Elev 184	[USN] SAN CLEMENTE ISLAND NALF (FREDERICK SHERMAN FLD) (KNUC)	
 * Circling not authorized S of Rwy 6-24.			MISSED APPROACH: Climb to 1500 via NUC TACAN R-236 then climbing right turn to 4000 via NUC R-033 to HETIT. Then arc NE of NUC TACAN via the 18 DME arc to PYRAS and hold.	
ATIS ★ 268.6	SAN CLEMENTE APP CON 127.05 292.15		SAN CLEMENTE ISLAND TOWER ★ 126.75 278.8	GND CON 0 119.55 251.05 ASR/PAR

CAUTION: Intermediate seg length 5 NM.



EMERG SAFE ALT 100 NM 12,100



SAN CLEMENTE ISLAND, CALIFORNIA

Orig 24FEB22

SAN CLEMENTE ISLAND NALF (FREDERICK SHERMAN FLD) (KNUC)

33°01'N-118°35'W

TACAN Y RWY 24

SW-3, 10 JUL 2025 to 07 AUG 2025

SW-3, 10 JUL 2025 to 07 AUG 2025