

SAN CLEMENTE ISLAND, CALIFORNIA

TACAN NUC Chan 123	APCH CRS 236°	Rwy Idg 9301 TDZE 184 Arpt Elev 184
------------------------------	-------------------------	--

[USN]

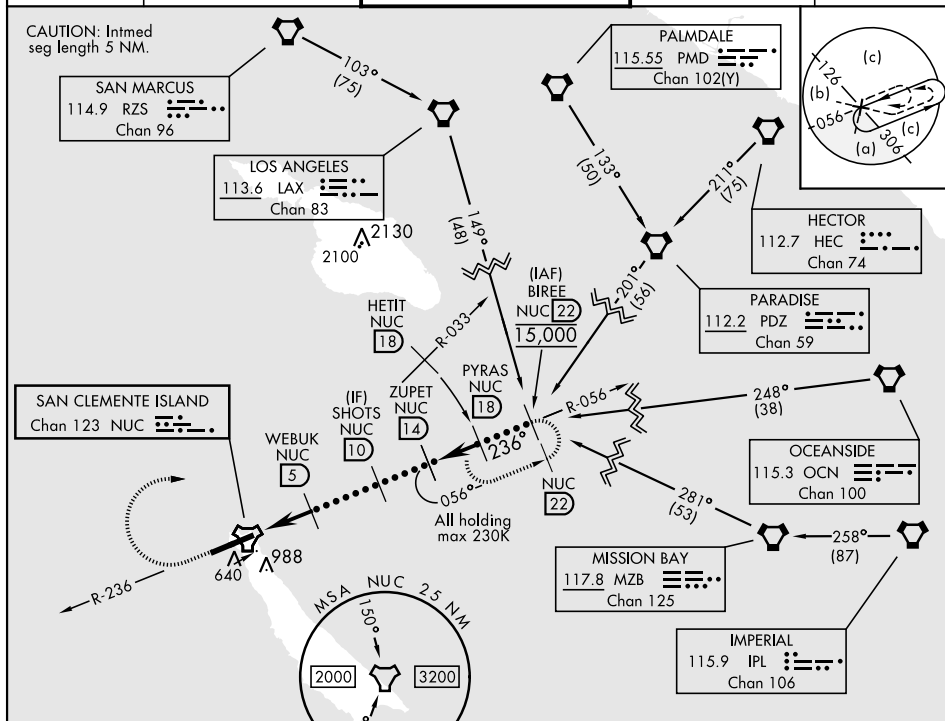
HI-TACAN Z RWY 24

SAN CLEMENTE ISLAND NALF
(FREDERICK SHERMAN FLD) (KNUC)

<p>▼ *Circling not authorized south of Rwy 6-24.</p>	<p>MISSED APPROACH: Climb to 1500 via NUC TACAN R-236 then climbing right turn to 4000 via NUC R-033 to HETIT. Then arc NE of the NUC TACAN via the 18 DME arc to PYRAS and hold.</p>
--	---

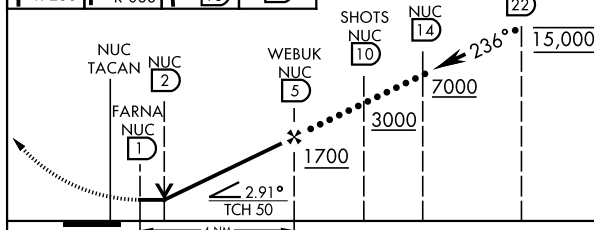
ATIS ★ 268.6	SAN CLEMENTE APP CON 127.05 292.15	SAN CLEMENTE ISLAND TOWER ★ 126.75 278.8	GND CON 0 119.55 251.05	ASR/PAR
-----------------	---------------------------------------	---	----------------------------	---------

CAUTION: Intmed
seg length 5 NM.



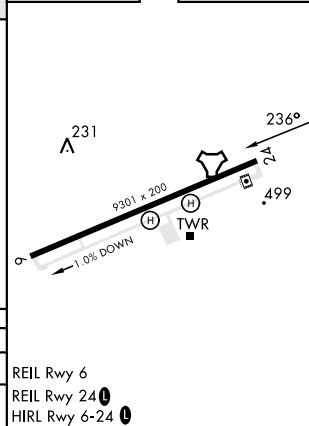
EMERG SAFE ALT 100 NM 12,100

1500 NUC R-236	4000 NUC R-033	HETIT Arc 18	PYRAS R-056 18
----------------------	----------------------	--------------------	----------------------



CATEGORY	C	D	E
S-24	780-134 596 (600-134)	596 (600-134)	
C CIRCLING*	780-134 596 (600-134)	780-2 596 (600-2)	

ELEV	184		TDZE	184
------	-----	--	------	-----



SAN CLEMENTE ISLAND, CALIFORNIA

33°01'N-118°35'W

SAN CLEMENTE ISLAND NALF (KNUC)
(FREDERICK SHERMAN FLD)

HI-TACAN Z RWY 24

Orig 24FEB22

SW-3, 10 JUL 2025 to 07 AUG 2025

SW-3, 10 JUL 2025 to 07 AUG 2025