

LOC H-LBE
110.9

APP CRS
236°

Rwy Idg
TDZE
1145
Apt Elev
1199

ILS or LOC RWY 24
ARNOLD PALMER RGNL (LBE)

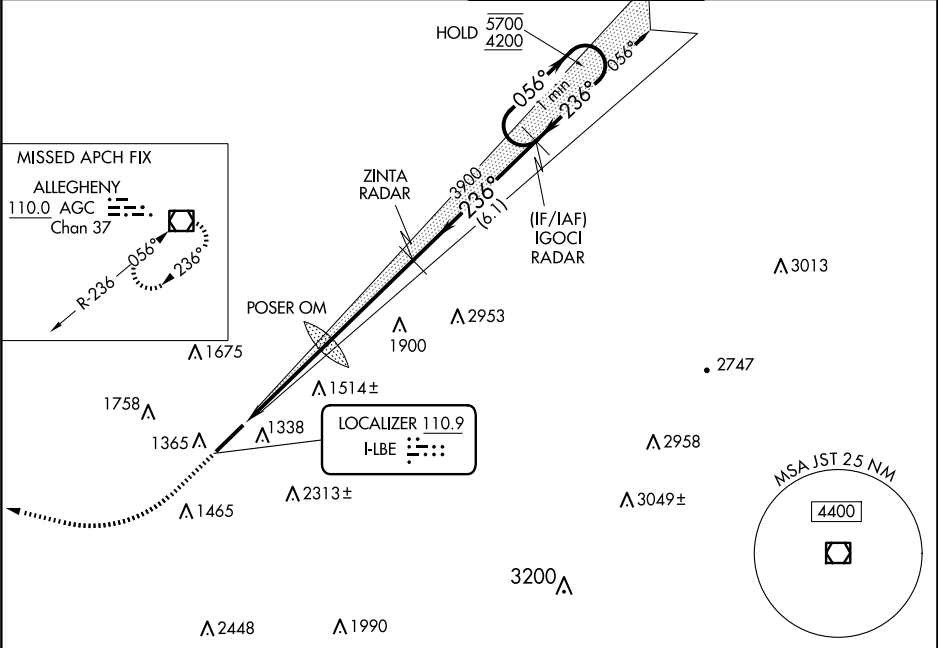
RNAV 1-GPS or RADAR required for procedure entry.
From IGOCI: RNAV 1-GPS required.
RADAR required.

MALSR
AS

MISSED APPROACH: Climb to 2000
then climbing right turn to 5000
direct AGC VOR/DME and hold.

⚠ Circling NA SE of Rwy 6-24. Inop table does not apply to S-LOC 24 Cats C/D.
For inop ALS, increase POSER OM minimums S-LOC 24 Cats C/D visibility to 1 3/4 SM.

ATIS 118.375	JOHNSTOWN APP CON ★ 121.2 299.2	PALMER TOWER ★ 125.0 (CTAF) 0	GND CON 121.8
------------------------	---	---	-------------------------



2000 5000 AGC

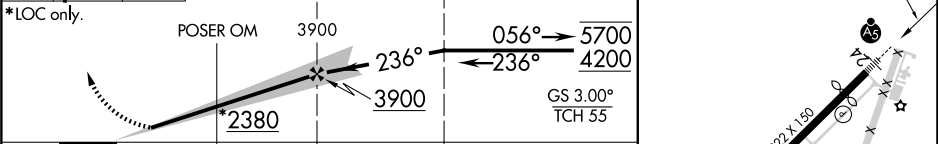
One Minute Holding Pattern

*LOC only.

POSER OM 3900 236° 056° 5700 4200

IGOCI RADAR

GS 3.00° TCH 55



		4.2 NM	4.3 NM	6.1 NM		
CATEGORY	A		B	C	D	
S-ILS 24	1345-½ 200 (200-½)					
S-LOC 24	2380-¾ 1235 (1200-¾)	2380-1 1235 (1200-1)	2380-3 1235 (1200-3)			
CIRCLING	2380-1¼ 1181 (1200-1¼)	2380-1½ 1181 (1200-1½)	2380-3 1181 (1200-3)			
POSER OM MINIMUMS						
S-LOC 24	1760-½ 615 (600-½)		1760-13⁄8 615 (600-13⁄8)			
CIRCLING	1760-1 561 (600-1)	1780-1 581 (600-1)	2060-2½ 861 (900-2½)	2060-2¾ 861 (900-2¾)		

FAF to MAP 8.5 NM					
Knots	60	90	120	150	180
Min:Sec	8:30	5:40	4:15	3:24	2:50

1.4% DOWN
600'
TWR 1223
2

REIL Rwy 6 ①
HIRL Rwy 6-24 ①