

WAAS CH <b>78103</b> <b>W04A</b>	APP CRS <b>038°</b>	Rwy Idg <b>11001</b> TDZE <b>947</b> Apt Elev <b>964</b>
--	------------------------	--

RNAV (GPS) RWY 4

GREENVILLE SPARTANBURG INTL (GSP)

RNP APCH.

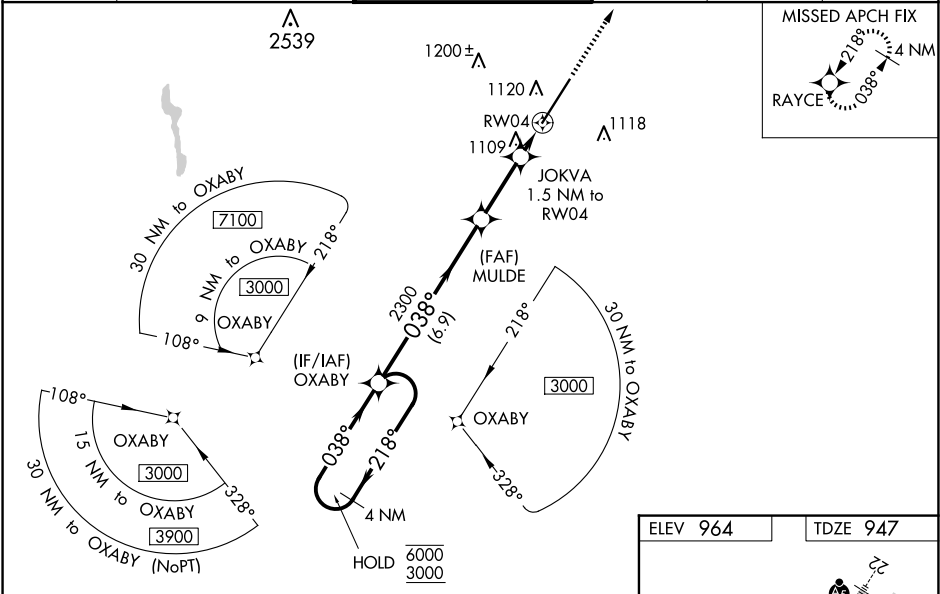
⚠

For uncompensated Baro-VNAV systems, LNAV/VNAV NA below -10°C or above 54°C. For inop ALS, increase LNAV/VNAV all Cats visibility to 1½ SM and increase LNAV Cat C/D visibility to RVR 6000. When local altimeter setting not received, use Greenville Downtown altimeter setting; increase LPV DA to 1176 feet and LNAV/VNAV DA to 1450 feet and all Cats visibility to RVR 5500; increase all MDAs 40 feet and visibility LNAV Cats C and D to RVR 4500 and Circling Cat D visibility ¼ SM. For inop ALS, when using Greenville Downtown altimeter setting, increase LNAV/VNAV all Cats visibility to 1½ SM. Baro-VNAV NA when using Greenville Downtown altimeter setting.

ALSF-2

MISSED APPROACH:  
Climb to 3000 direct RAYCE and hold.

ATIS <b>134.25</b>	GREER APP CON★ <b>118.8 270.275</b>	GREER TOWER★ <b>120.1 (CTAF) 251.15</b>	GND CON <b>121.9</b>	CLNC DEL <b>121.9</b>	UNICOM <b>122.95</b>
-----------------------	--	--	-------------------------	--------------------------	-------------------------



4 NM Holding Pattern		OXABY		RAYCE	
6000 ← 218°		2300		*1460	
3000 → 038°		2300		1460	
GP 3.00°		2300		1460	
TCH 55		2300		1460	
6.9 NM		2.6 NM		1.5 NM	
CATEGORY	A	B	C	D	
LPV DA	1147/18		200 (200-½)		
LNAV/VNAV DA	1421/50		474 (500-1)		
LNAV MDA	1360/24	413 (400-½)	1360/40	413 (400-¾)	
CIRCLING	1440-1	476 (500-1)	1480-1½ 516 (600-1½)	1700-2¼ 736 (800-2¼)	

