

| | | | |
|---|------------------------|--|---|
| LOC/DME I-GSP 109.3 Chan 30 | APP CRS 038° | Rwy ldg 11001 TDZE 947 Apt Elev 964 | ILS or LOC RWY 4 GREENVILLE SPARTANBURG INTL (GSP) |
|---|------------------------|--|---|

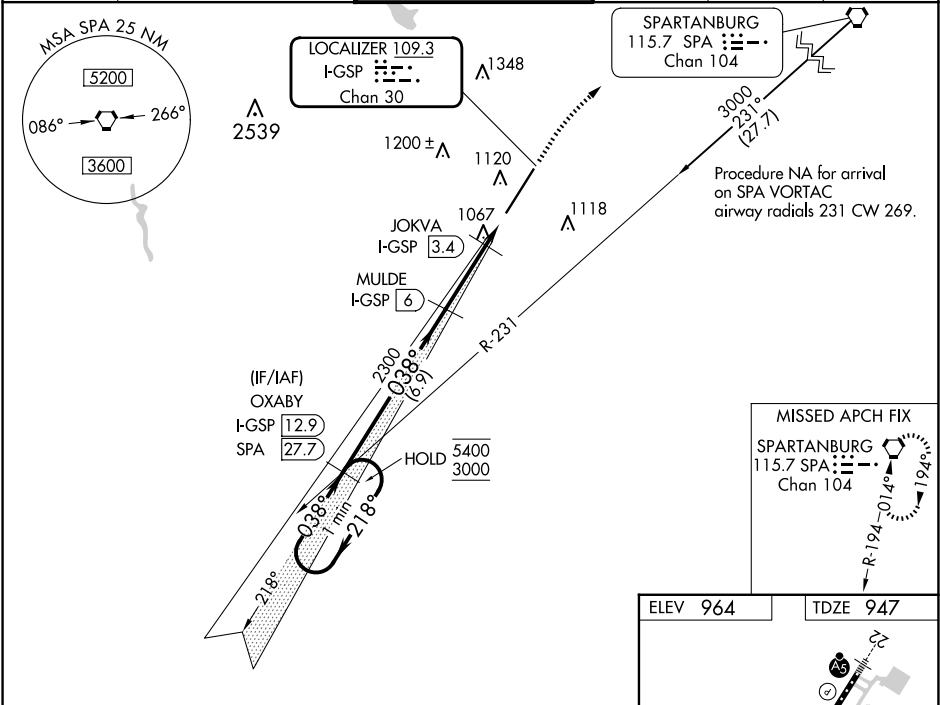
DME required.

For inop ALS, increase S-LOC 4 Cats C and D visibility to RVR 5500. When local altimeter setting not received, use Greenville Downtown altimeter setting: increase DA to 1176 feet; increase all MDAs 40 feet and visibility S-LOC 4 Cat C/D to RVR 4000 and Circling Cat D ¼ SM. For inop ALS, when using Greenville Downtown altimeter setting, increase S-LOC 4 Cats C/D visibility to RVR 6000.

ALSf-2

MISSED APPROACH:
Climb to 3000 then
right turn direct SPA
VORTAC and hold.

| | | | | | |
|-----------------------|--|--|-------------------------|--------------------------|-------------------------|
| ATIS 134.25 | GREER APP CON★ 118.8 270.275 | GREER TOWER★ 120.1 (CTAF) 0 251.15 | GND CON 121.9 | CLNC DEL 121.9 | UNICOM 122.95 |
|-----------------------|--|--|-------------------------|--------------------------|-------------------------|



| | | | | | |
|----------------------------|---------------------|------------------|-------------------------|-------------------------|---------------|
| One Minute Holding Pattern | | OXABY I-GSP 12.9 | MULDE I-GSP 6 | JOKVA I-GSP 3.4 | SPA I-GSP 1.9 |
| 5400 ← 218° | | 3000 → 038° | 2300 | *1460 | |
| GS 3.00° TCH 55 | | 6.9 NM | 2.6 NM | 1.5 NM | |
| CATEGORY | A | B | C | D | |
| S-ILS 4 | 1147/18 200 (200-½) | | | | |
| S-LOC 4 | 1320/24 | 373 (400-½) | 1320/35 | 373 (400-¾) | |
| CIRCLING | 1440-1 | 476 (500-1) | 1480-1½ 516 (600-1½) | 1700-2¼ 736 (800-2¼) | |

ELEV 964

TDZE 947

1100 X 150

TWR 1061

038°

CL Rwy 22

HIRL Rwy 4-22

TDZ/CL Rwy 4