

VOR/DME ESC 113.55 Chan 82 (Y)	APP CRS 351°	Rwy ldg 5015 TDZE 600 Apt Elev 609
--	------------------------	---

VOR RWY 1
DELTA COUNTY (ESC)

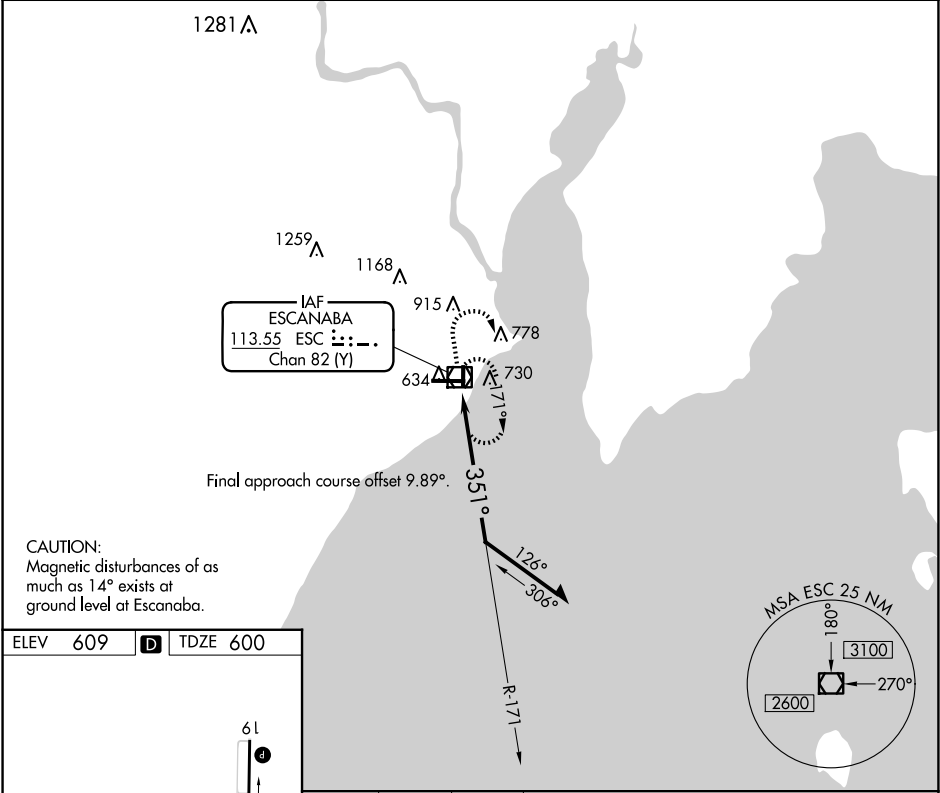
▼

▲

Rwy 1 helicopter visibility reduction below ¾ SM NA.

MISSED APPROACH: Climb to 2400 then right turn direct ESC VOR/DME and hold.

AWOS-3PT 121.425	MINNEAPOLIS CENTER 127.65	UNICOM 122.8 (CTAF) 0
----------------------------	-------------------------------------	--



ELEV 609 **D** TDZE 600

61 **▲** 6498 X 150 5015 X 100 28 0.3% UP 101 649

351°

HIRL Rwy 10-28 **1**
MIRL Rwy 1-19 **1**
REIL Rwy 1 and 28 **1**

2400	ESC	ESC VOR/DME	171°	2200	351°	1.4
Remain within 10 NM						
CATEGORY	A	B	C	D		
S-1	1080-1 480 (500-1)		1080-1¾ 480 (500-1¾)			
CIRCLING	1080-1 471 (500-1)		1280-2 671 (700-2)	1480-2¾ 871 (900-2¾)		

EC-1, 10 JUL 2025 to 07 AUG 2025

EC-1, 10 JUL 2025 to 07 AUG 2025